



2025 WASZP Atlantic Coast Championships (ACCs)

Organizing Authority: Toms River Yacht Club (TRYC)

1464 Riviera Ave, Toms River, NJ 08753

June 6th – 8th, 2025

Sailing Instructions

The notation '[NP]' in a rule of the Notice of Race (NoR) means that a boat may not protest another boat for breaking that rule. This changes RRS 60.1.

1 RULES

- 1.1 The event is governed by the *rules* as defined in [The Racing Rules of Sailing for 2025–2028 \(RRS\)](#).
- 1.2 The [US Sailing Prescriptions](#) to the RRS, and the [current \(R15\) official WASZP Class rules](#) shall also apply.
- 1.3 [DP][NP] RRS 40.1 applies at all times while afloat.
- 1.4 RRS Appendix T, Arbitration, will apply.
- 1.5 The Vakaros RaceSense system will be utilized by the race committee. This changes RRS 41(c).
- 1.6 RaceSense information is available to all boats.
- 1.7 Failure of a Vakaros device or the RaceSense system shall not be grounds for redress. This changes RRS 63.1, 61.1(a), 61.1(b) and 61.1(c).
- 1.8 While racing, each boat shall have a working Vakaros WASZP mount and device configured for RaceSense and mounted in the manufacturer provided GPS mount location. Boats shall either provide their own working Vakaros device or shall rent a Vakaros device for CAD \$150.
- 1.9 Indicate when registering, if a rental Atlas 2 device or Race Sense license is required. WeCANFoil (<https://wecanfoil.org>) will be managing these arrangements

for competitors. To rent an Atlas 2 and/or book a charter, please click [here](#).

- 1.10 All race start times and signals will be taken from Vakaros. RRS 26 is changed to, "Races will be started by RaceSense. Times shall be taken from the timer display on a boat's Vakaros unit. There may not be any visual or sound signals made by the RC signal boat. Visual and sound signals may be made as a courtesy to sailors, the RaceSense timer on the Vakaros unit supersedes any visual or sound signals made by the race committee signal boat". However, any starting penalties (RRS 30.1–30.4) shall be indicated by raising the corresponding flag (see RRS "Race Signals" "Preparatory Signals") at the 4 minute warning and lowering it at 1 minute, consistent with RRS 26. No accompanying sound is required, but it may be given as a courtesy.
- 1.11 If there is a conflict between the sailing instructions and notice of race, the sailing instructions will take precedence. This changes RRS 63.5(c).
- 1.12 The US Sailing prescription to RRS 63.1 shall NOT apply (requirement that any boat may participate in a redress hearing and requirement to notify all boats)
- 1.13 In the event that the Sailing Instructions conflict with the Notice of Race, the Sailing Instructions shall be taken to be correct, not the Notice of Race.

2 SIGNALS MADE ASHORE

- 2.1 Signals made ashore will be displayed on the Toms River Yacht Club (TRYC) flag pole.
- 2.2 Flag AP displayed ashore means races are postponed. The first warning signal will be made not less than forty (40) minutes after the AP displayed ashore is lowered. This changes the RRS Race Signals AP Rule.
- 2.3 [NP][DP] Flag D displayed ashore means it is time to launch, and sail to the racing area.

3 CHANGES TO THE SAILING INSTRUCTIONS AND SCHEDULE

- 3.1 Any change to the sailing instructions will be posted before 0900 hrs on the day it will take effect, except that any change to the schedule of races will be posted by 2000 on the day before it will take effect.

4 COMMUNICATION

- 4.1 The Official Noticeboard (ONB) is located at <https://racehub.waszp.com/eventdetail/436>
- 4.2 A WhatsApp group may be used for unofficial communication. A QR code to join the WhatsApp group will be made available to competitors on site check-in.

5 SCHEDULE

5.1 The table below outlines the provisional event schedule:

Date	Activity	Time
Fri. 6/6	Competitors Briefing	0930
Fri. 6/6	First Warning	1100
Sat. 6/7	Competitors Briefing	0930
Sat. 6/7	First Warning	1100
Sat. 6/7	Reception with Drinks & Food following sailing	1600
Sun. 6/8	Competitors Briefing	0930
Sun. 6/8	First Warning	1100
Sun. 6/8	No warning signal made after	1500

5.2 A daily briefing will take place at 0930.

5.3 On the last scheduled day of racing, no warning signal will be made after 1500.

6 EQUIPMENT INSPECTION

6.1 A boat or equipment may be inspected at any time for compliance with the *rules*.

6.2 [DP] The penalty for infringement of a class rule may be less than disqualification.

7 CLASS FLAGS

7.1 The class flag is a white rectangle with black borders and a black WASZP logo.

8 RACING AREA

8.1 Addendum A the racing areas which include the "Toms River Course Area" and the "Wanamaker Course Area" on Barnegat Bay.

9 COURSES

9.1 Addendum B shows the course(s), the order in which marks are to be passed and the side on which each mark is to be left.

10 THE START

10.1 The start line is between two vakaros units mounted to two tall and narrow pin buoys. The port side of the start line will be a green pin, while the starboard side will be an orange pin. The RC Signal boat will be in the vicinity of the start line, however recalls will be automatically displayed on competitors Vakaros units (changes RRS 29).

- 10.2 RRS 26 is changed to, "Races will be started by RaceSense. Times shall be taken from the timer display on a boat's Vakaros unit. There may not be any visual or sound signals made by the RC signal boat. Visual and sound signals may be made as a courtesy to sailors, the RaceSense timer on the Vakaros unit supersedes any visual or sound signals made by the race committee signal boat" However, any penalty flags (RRS 30.1, 30.2, 30.3, or 30.4) in effect are displayed by the RC signal boat in the vicinity of the start line.
- 10.3 Race signal Preparatory signal is changed to 4:00 on a boat's Vakaros unit. This changes Race Signals Preparatory signals.

Minutes before starting signal	Visual signal on Vakaros Unit	Means
5	5:00	Warning Signal
4	4:00	Preparatory Signal
1	1:00	One minute
0	0:00	Starting Signal

11 RECALLS

- 11.1 Individual recalls will be made by the Vakaros RaceSense system. The Race Committee will not notify competitors who are over via VHF or by hailing them and will not display flag X. Notification will be via red lights on your Vakaros RaceSense after the start and display of text "OCS". If your device notifies you that you are OCS, you must sail back below the line until your unit light changes from red to green unless RRS 30.3 or 30.4 are in effect. This changes RRS 29.
- 11.2 Race signal X Individual Recall is changed to the display of "OCS" and red lights on a boat's Vakaros unit. This Changes RRS 29.
- 11.3 RRS 29.1 is changed to, "When at a boat's starting signal any part of her hull is on the course side of the starting line or she must comply with rule 30.1, the race committee will promptly notify all such boats by displaying 'OCS' and displaying red lights on the boat's Vakaros unit. The notification shall be displayed until the hull of the boat has been completely on the pre-start side of the starting line or one of its extensions, and until the boat has complied with rule 30.1 if it applies, but no later than 5 minutes after the starting signal. If rule 29.2, 30.3 or 30.4 applies this rule does not."

12 MARKS

- 12.1 A description of the marks will be provided verbally during the competitors meeting on the first day.

13 CHANGE OF THE NEXT LEG OF THE COURSE

- 13.1 The race committee may, without signal, move a mark to change the direction up to 20 degrees or the length up to 10% of the previous length, or adjust the angle or width of the leeward gate, provided that no boat is sailing to the mark. This changes RRS 33.

14 THE FINISH

- 14.1 The finish is downwind between the same two marks and Vakaros units used as the starting line. The green buoy shall be kept to starboard while finishing.
- 14.2 [DP] After the first boat has sailed the course and finished, a boat may be told it has finished by an official vessel or "race over" may be displayed on its Vakaros unit, or flag W may be displayed at the leeward gate. When this happens, the boat shall return to the vicinity of the signal vessel. That boat will be scored in its last known position. Boats having sailed one lap will be scored behind those having sailed two laps. This changes SI 16.2, RRS 28, RRS 35, RRS A3 and RRS A5.
- 14.3 [DP] A vessel that has been told it has finished, been shown flag W at the leeward gate, or had "race over" displayed on its Vakaros unit shall not cross the finish line between the two Vakaros units on the pin buoys, but shall sail around them to the starting area.

15 PENALTY SYSTEM

- 15.1 RRS 44.1 and P2.1 are changed so that the Two-Turns Penalty is replaced by the One-Turn Penalty.

16 TIME LIMIT

- 16.1 If no boat has passed the first mark within 15 minutes, the race will be abandoned.
- 16.2 If no boat sails the course and finishes within 40 minutes the race will be abandoned (RRS 35).
- 16.3 Boats not finishing within 5 minutes of the first finisher may be scored in place according to SI 14.3 (whiskey finishes). This changes RRS 35 and RRS 28. This shall not be grounds for redress.

17 PROTESTS AND REQUESTS FOR REDRESS

- 17.1 The protest time limit is 75 minutes after the signal boat was moored. The time will be posted on the competitors' WhatsApp group.
- 17.2 Competitors shall hail the RC Signal Boat after finishing and indicate that they intend to file a protest.
- 17.3 Notices will be posted to the competitors WhatsApp group no later than 30 minutes after the protest time limit to inform competitors of hearings in which they

are parties or named as witnesses.

18 SCORING

18.1 3 races are required to be completed to constitute a championship.

18.2 The Low Point Scoring System of RRS Appendix A will apply with the following modifications:

- (a) When fewer than 5 races have been completed, a boat's series score is the total of her race scores.
- (b) When 5 to 8 races have been completed, a boat's series score is the total of her race scores excluding her worst score.
- (c) When 9 to 12 races have been completed, a boat's series score is the total of her race scores excluding her two worst scores.
- (d) When 13 or more races have been completed, a boat's series score is the total of her race scores excluding her three worst scores.

19 SUPPORT VESSELS

19.1 Support vessels are permitted at this event.

20 NUMBER OF RACES

20.1 No more than 15 races shall be conducted.

21 BERTHING

[DP] [NP] Boats shall be kept in their assigned places while in the boat park. See the venue diagram in Addendum C.

22 DATA PROTECTION

The personal information you provide to the Organising Authority will be used to facilitate your participation in the event. If you have agreed to be bound by the Racing Rules of Sailing and the other rules that govern the event (the *rules*), the legal basis for processing that personal information is contract. If you are not bound by the *rules*, the legal basis for processing that personal information is legitimate interest. Your personal information will be stored and used in accordance with the Organising Authority's privacy policy. When required by the rules, personal information may be shared with your national authority and/or World Sailing. The results of the event and the outcome of any hearing or appeal may be published.

23 RIGHTS TO USE NAMES AND LIKENESS (PHOTOGRAPHY CONSENT)

Competitors automatically grant to the Organising Authority without payment the right in perpetuity to make, use and show any motion pictures, still pictures and live, taped or filmed television of or relating to the event.

24 RISK STATEMENT

- 24.1 Rule 3 of the Racing Rules of Sailing states: 'The responsibility for a boat's decision to participate in a race or to continue racing is hers alone.'
- 24.2 Sailing is by its nature an unpredictable sport and therefore inherently involves an element of risk. By taking part in the event, each competitor agrees and acknowledges that:
- (a) They are aware of the inherent element of risk involved in the sport and accept responsibility for the exposure of themselves, their crew and their boat to such inherent risk whilst taking part in the event;
 - (b) They are responsible for the safety of themselves, their crew, their boat and their other property whether afloat or ashore;
 - (c) They accept responsibility for any injury, damage or loss to the extent caused by their own actions or omissions;
 - (d) Their boat is in good order, equipped to sail in the event and they are fit to participate;
 - (e) The provision of a race management team, patrol boats and other officials and volunteers by the event organizer does not relieve them of their own responsibilities;
 - (f) The provision of patrol boat cover is limited to such assistance, particularly in extreme weather conditions, as can be practically provided in the circumstances;
 - (g) It is their responsibility to familiarise themselves with any risks specific to this venue or this event drawn to their attention in any rules and information produced for the venue or event and to attend any competitor briefing held for the event.

25 INSURANCE

- 25.1 Each participating boat shall be insured with valid third-party liability insurance with a minimum cover of \$500,000 per incident or the equivalent.

26 PRIZES

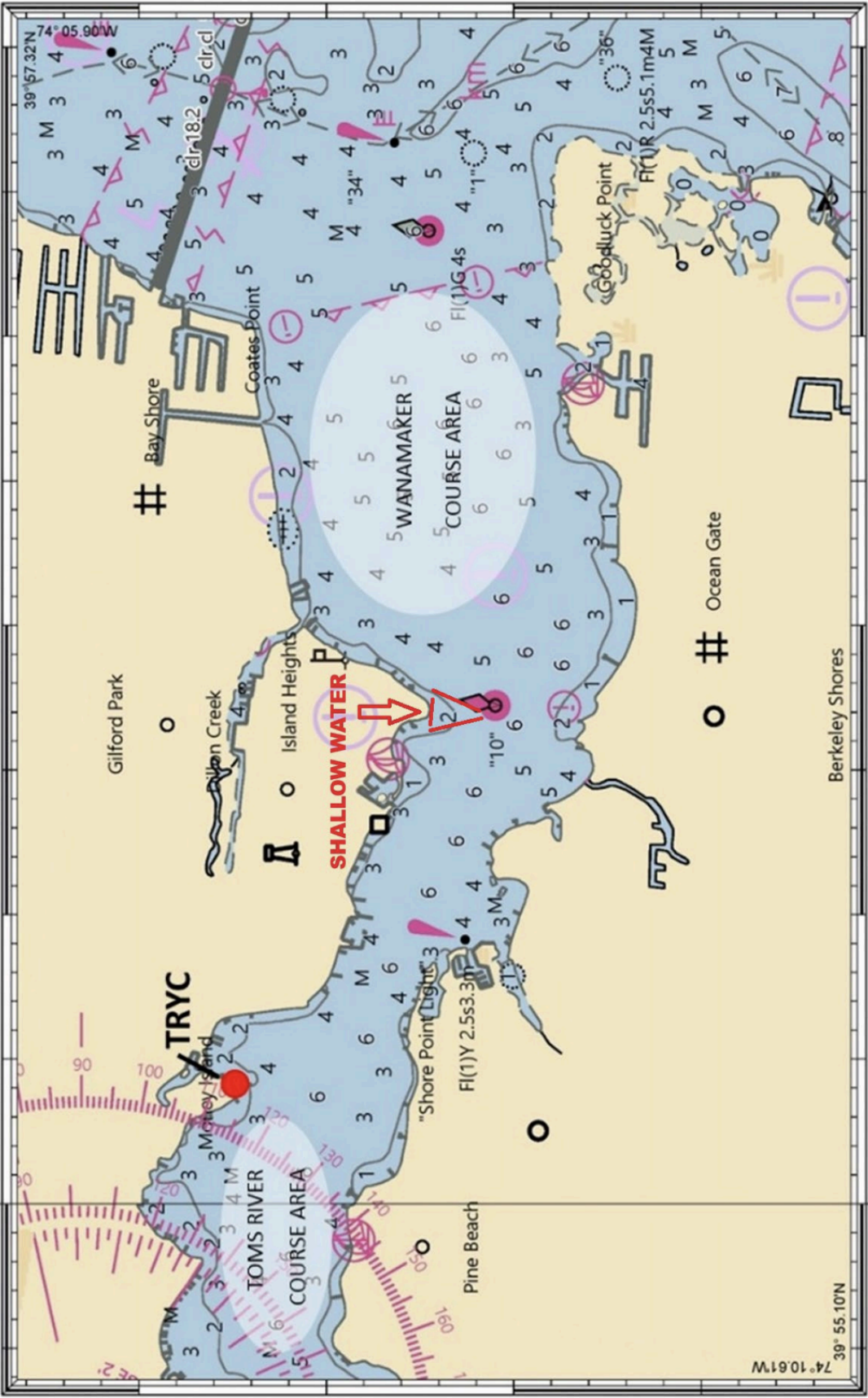
- 26.1 Prizes will be awarded for the following positions and may be amended according to the split of the fleets. Ages are taken as of the event start date:
- (a) Top 3 men
 - (b) Top 3 women
 - (c) Top sailor in each age division: Junior (U19), Youth (U21), Core (21-29), Master (30-49), Super Master (50+)
 - (d) Top U16 (not 8.2 rig)

27 FURTHER INFORMATION

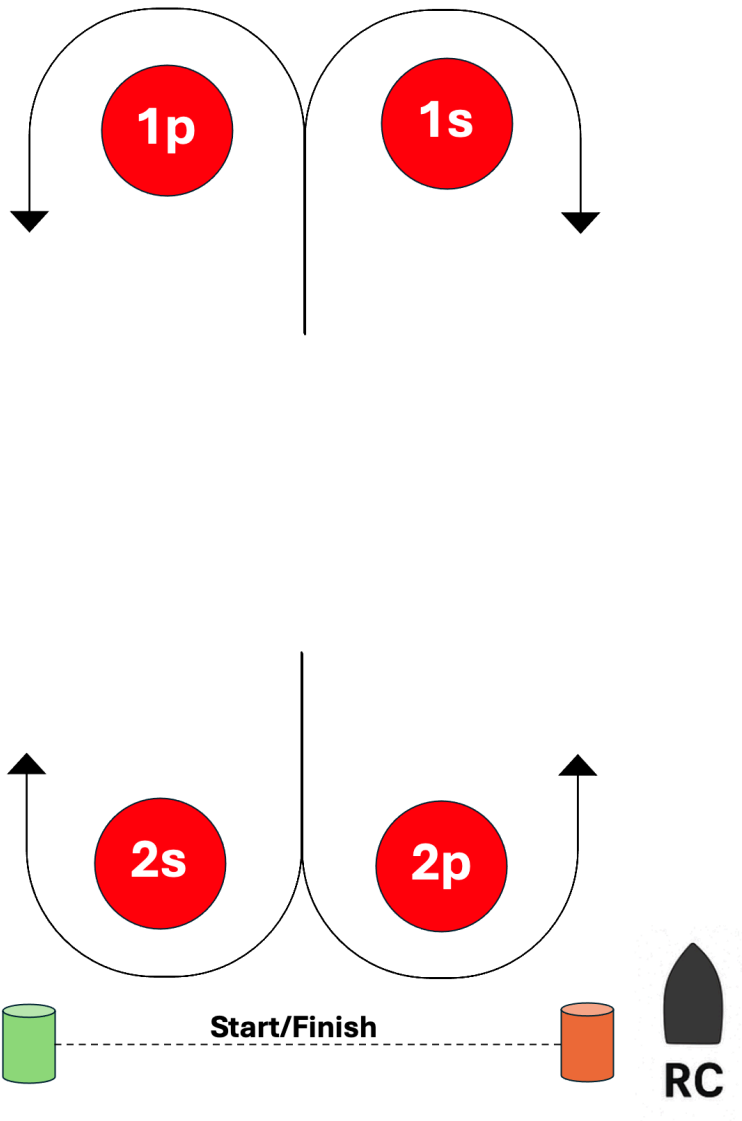
For further information, please contact waszpclassusa@gmail.com.

For venue queries, please contact Robert Baxter (rabaxter34@gmail.com).

Addendum A: Course Areas



Addendum B: Courses



Windward Leeward (WL) courses with gates

WL:

1. Start between the tall skinny cylindrical marks
2. Pass through the windward gate and round keeping 1p to port, 1s to starboard
3. Finish between the tall skinny cylindrical marks

W2L2:

1. Start between the tall skinny cylindrical marks
2. Pass through the windward gate and round keeping 1p to port or 1s to starboard
3. Pass through the leeward gate and round keeping 2s to starboard, 2p to port
4. Pass through the windward gate and round keeping 1p to port, 1s to starboard
5. Finish between the tall skinny cylindrical marks

Addendum C: Storage and Venue Diagram



Addendum D: WhatsApp group QR code



2025 WASZP ACCs

WhatsApp group



Scan or upload this QR code using the WhatsApp
camera to join this group