



2025 NSW WASZP State Championships

15-16 Feb 2025

SAILING INSTRUCTIONS (SIs)

1 RULES AND OA

1.1 See NORv4.

2 CHANGES TO SAILING INSTRUCTIONS

2.1 Changes impacting the racing schedule will be posted by 2000hrs on the day before they take effect. Any other SI changes will be posted 90 minutes before they take effect.

3 SIGNALS MADE ASHORE

- 3.1 Signals made ashore will be displayed on the flag pole in the WSC boatyard.
- 3.2 Race Signal AP is changed so that when flag AP is displayed ashore, the first warning signal shall be not less than 30 minutes from its removal or earlier if the Race Committee reasonably deems that all boats intending to compete are in the course area and ready.

4 FORMAT & SCHEDULE OF RACES

- 4.1 Four races are scheduled per day; a maximum of five races may be sailed in a day.
- 4.2 A maximum of 9 races will be sailed for the championship.

5 SCORING

- 5.1 Three races are required to be completed to constitute a series.
- 5.2 A boat's series score will be the total of her race scores discarding her worst score(s) based on the number of races completed with reference to the following table:

Races completed	3	4 - 6	7 - 9
Discards	0	1	2

5.3 Competitors may submit a scoring enquiry at the race office.

6 THE START

- 6.1 To alert boats that a race will begin soon, the orange start line flag will be displayed with one sound approximately three minutes before the warning signal.
- 6.2 The courses and marks are set out in the Attachment.
- 6.3 During the start sequence, a numeral pennant indicating the course for the next race will be displayed from the stern of the Signal Vessel.
- 6.4 The class flag will be a gold flag with the class insignia.
- 6.5 The start line is between the staff displaying the orange flag on the Signal Vessel at the starboard end and the Start mark.
- 6.6 A boat that does not start within five minutes after her starting signal will be scored DNS without a hearing. This changes RRS A5.1 and A5.2.

7 FINISH

- 7.1 The Finish line is between the staff displaying a blue flag on the Signal Vessel and the Finish mark.
- 7.2 Grand Prix Finish
- When the leading boat is in the vicinity of Mark 2p for the final time, the Signal Vessel will display the chequered Finish Flag with a sound signal. The Finishing Window opens when the leading boat crosses the by Finish Line. The Signal Vessel will close the Finishing Window by removing the chequered Finish Flag at the earlier of the end of the finishing window time limit or when the last boat finishes. Boat's attention may be drawn to the state of the Finishing Window by a vessel near Marks 2s/2p unofficially replicating finish flag movements.
 - All boats (a) completing a lap before the Finishing Window opens but failing to finish while it is open, or (b) crossing the Finish line while the Finishing Window is open,

shall be deemed to have finished irrespective of the number of laps completed. Their race positions will be based on the order they either completed their last lap or crossed the Finish line, with those progressing furthest around course placing ahead. This changes RRS 28.1 and A4.

- iii. [DP] While the Finishing Window is open, all boats on a downwind leg shall round Mark 2p and sail to the Finish line. A boat approaching Marks 2s/2p while the Finishing Window is open shall not attempt a further lap.
 - iv. If a boat is asked by an official vessel, it shall return to the starting area. Such boats will be scored in their last known position. This changes RRS 28.1, A5.1 and A5.2.
- 7.3 [DP] After finishing, boats shall continue at least 200m before stopping.
- 7.4 [DP] After finishing and while the Finishing Window is open, boats should avoid boats racing and shall not sail near the Finish Line.

8 SHORTEN COURSE

- 8.1 When the Race Committee shortens the course by displaying flag S as the leader(s) approach the leeward gate (Marks 2p/2s), all boats shall round Mark 2p and proceed to finish at the Finish Line. Changes RRS 32.2(c). SI 7.2 applies.

9 TIME LIMITS AND TARGET TIMES

9.1 See table below

Time Aspect	Mark 1 Time Limit	Target Time	Race Time Limit <i>(see RRS 35)</i>	Finishing Window <i>(from time of 1st Finisher)</i>
Time (minutes)	12	20	40	10

- 9.2 If no boat has passed the first mark within the Mark 1 Time Limit, the race will be abandoned.
- 9.3 Failure to meet the Target Time will not be grounds for redress.
- 9.4 The protest time limit is 40 minutes after the later of; the last boat finishing the last race of the day or no more racing today being signalled. This time will be posted on the official notice board located at the race office.

10 HEARING REQUESTS

- 10.1 Hearing request forms can be submitted by lodging a 'protest hearing request' form via the race office within the protest time limit.
- 10.2 Notices will be posted no later than 20 minutes after the protest time limit to inform competitors of hearings in which they are parties or named as witnesses. Hearings will be held in the protest room, located downstairs at the clubhouse.

11 SAFETY REGULATIONS

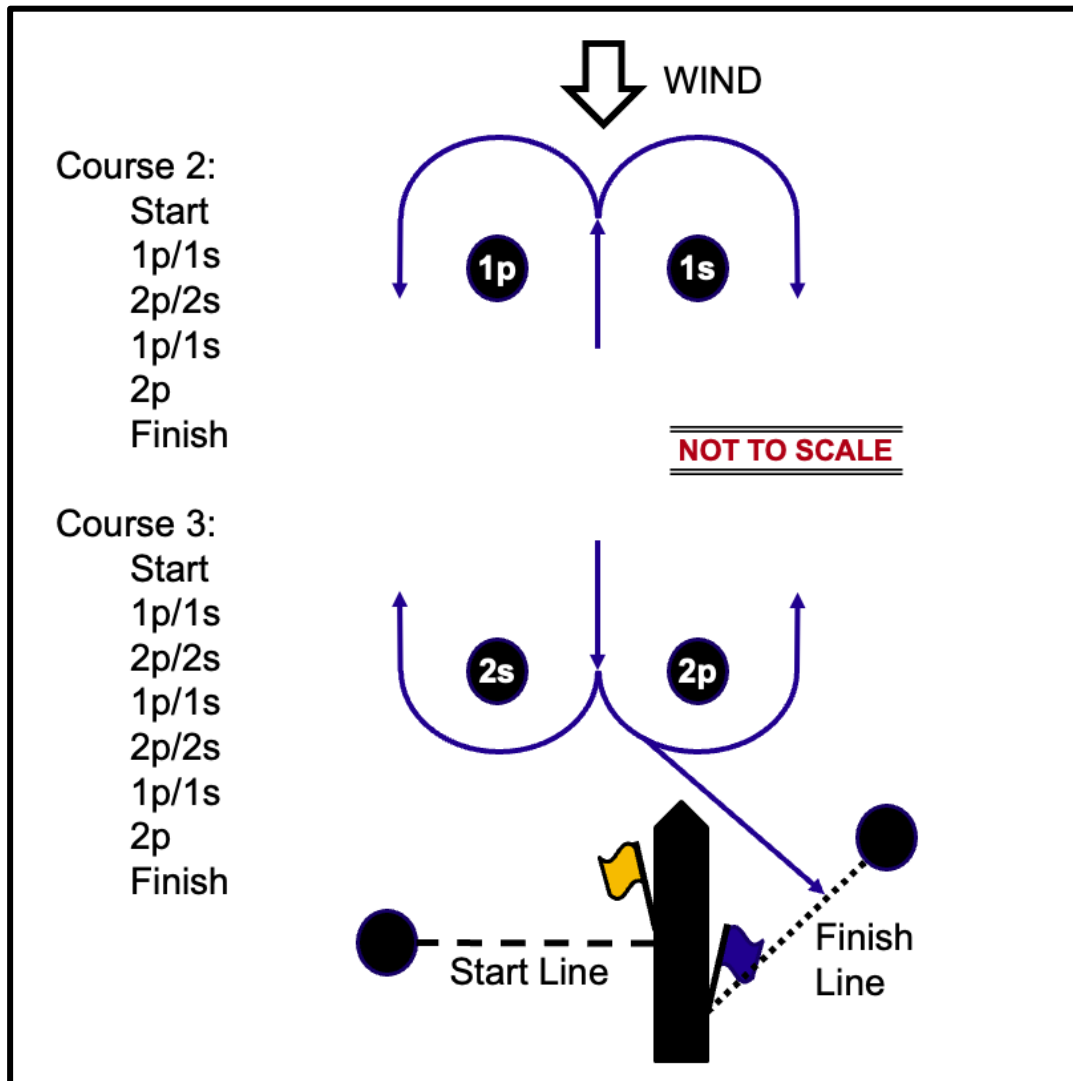
- 11.1 [DP] A boat retiring from a race shall notify the race committee at their first reasonable opportunity.
- 11.2 [DP] Boats shall sign on before going afloat and sign off at their first reasonable opportunity after returning ashore by using the sign on/off sheets at reception.

12 EQUIPMENT AND MEASUREMENT CHECKS

- 12.1 A boat or equipment may be inspected at any time for compliance with the rules.
- 12.2 [DP][NP] The technical or race committee may instruct a competitor to keep their boat fully rigged when they return to shore until released by the head of the technical committee. Competitors shall comply with such instructions.

ATTACHMENT; COURSES & MARKS

1. The course configuration is as follows:



2. Marks are inflatable with colours as follows:

Mark	Start Pin	1p and 1s	2p and 2s	Finish
Colour	White	Both Red/Yellow	Both Red/Yellow	Blue