



FRENCH WASZP CHAMPIOSHIP 2024

July 4-7, 2024 - La Grande Motte

Organizing Authority: Centre d'Entraînement Méditerranée

Supporting Club: Yacht Club de La Grande Motte

Grade 3

The notation [NP] (No Protest) in a rule of the Sailing Instructions (SI) means that a boat cannot protest another boat for breaking that rule. This modifies RRS 60.1(a). The notation [SP] in a rule of the SI means that the penalty for a breach of that rule will be a standard penalty applied by the Race Committee without a hearing. This modifies RRS 63.1. The notation [DP] in a rule of the SI means that the penalty for a breach of that rule may, at the discretion of the jury, be less than disqualification.

Sporting events are above all a space for exchange and sharing accessible to all. As such, competitors and support persons are expected to behave courteously and respectfully at all times, on land and water, regardless of the origin, gender, or sexual orientation of other participants or support persons. A competitor or support person who does not respect these principles may be penalized under RRS 2 or 69.

1. RULES

The regatta will be governed by:

- 1.1 The rules as defined in the Racing Rules of Sailing (RRS) 2021/2024.
- 1.2 The national prescriptions translated for foreign competitors.
- 1.3 The appendix "Technical and Safety Rules for Foiling Boats."
- 1.4 The WASZP Class Rules dated November 13, 2023.
- 1.5 Appendix P (Special Procedures for Rule 42) will apply, as mentioned in SI 15.
- 1.6 Appendix T (Arbitration) will apply.
- 1.7 In case of translation of these SIs, the French text will prevail.

2. CHANGES TO SAILING INSTRUCTIONS

2.1 Any change to the sailing instructions will be posted on the WhatsApp group <https://chat.whatsapp.com/BrB0cbTQDUU30lrfkxT3dW> no later than 2 hours before the warning signal of the race in which it takes effect, except for any change in the schedule of races which will be posted by 21:00 on the day before it will take effect.

2.2 Each competitor must provide a phone number compatible with the WhatsApp group: <https://chat.whatsapp.com/BrB0cbTQDUU30lrfkxT3dW> at the time of registration or send the number to be registered to the email: cemed@orange.fr.





2.3 Changes to one or more sailing instructions may be made on the water before the start of a race: the Race Committee will then display the L flag on the committee boat and communicate the information by voice and/or on the race VHF channel.

3. COMMUNICATION WITH COMPETITORS

3.1 Official notices will be posted on the WhatsApp communication group <https://chat.whatsapp.com/BrB0cbTQDUU30lrfkxT3dW> set up by the organizer.

3.2 The race office is located at the Yacht Club de La Grande Motte.

4. CODE OF CONDUCT

4.1 [DP] [NP] Competitors and support persons must comply with reasonable requests from race officials.

4.2 [DP] [NP] Competitors and support persons must place the advertising provided by the organizing authority carefully, as good sailors, in accordance with the instructions for use and without interfering with its functioning.

5. SIGNALS MADE ASHORE

5.1 Signals made ashore will be displayed on the flagpole located at the entrance to the boat park (competitors' boat storage area - West hardstanding).

5.2 The display of the L flag ashore means: a notice to competitors has been published as provided in SI 2.1 (this changes race signals).

5.3 When the AP flag is displayed ashore, the warning signal will not be made less than 60 minutes after the AP is lowered (this changes race signals).

6. SCHEDULE OF RACES

6.1 Race dates:

Date	Format	Competitors briefing	Time of the first warning signal
3 juillet 2024		17h30 FR	
4 Juillet 2024	Slalom		13h00 FR
5 Juillet 2024	Championship - windward/leeward course with gates		10h00 FR
6 Juillet 2024	Championship - windward/leeward course with gates		10h00 FR
7 Juillet 2024	Championship - windward/leeward course with gates		09h00 FR

6.2 For championship days, a maximum of 4 races per day is scheduled. Two additional races per day may be sailed, provided they are not more than one race ahead of schedule and that the change is made in accordance with SI 2.1.





6.3 Championship races may be moved to July 4 and slalom races may be postponed or canceled, depending on weather conditions.

6.4 On the last scheduled day of racing, no warning signal will be made after 15:00 (except in case of general recall or delay during the procedure - display of AP).

6.5 To alert boats that a race or sequence of races will begin soon, an orange flag will be displayed with one sound signal at least three minutes before the warning signal is displayed.

6.6 The conduct of the slalom race and the organization of the pools will be published the day before the race on the WhatsApp group <https://chat.whatsapp.com/BrB0cbTQDUU30lrfkxT3dW>.

This slalom will have a separate ranking.

7. CLASS FLAGS

The class flag is the WASZP flag.

8. RACING AREAS

The location of the racing areas is defined in Appendix RACING AREAS.

9. THE COURSES

9.1 The SLALOM courses are described in Appendix COURSES, including the order in which marks are to be passed and the side on which each mark is to be left.

9.2 The courses of the Championship are described in Appendix COURSES, including the order in which marks are to be passed and the side on which each mark is to be left.

9.3 No later than the warning signal, the race committee will indicate the course to be sailed and, if necessary, the bearing. The signals defining the course to be sailed are described in Appendix COURSES.

9.4 During the SLALOM, boats not racing are prohibited from navigating in the secure and race areas. [DP]

10. MARKS

The marks are described in Appendix COURSES.

11. AREAS THAT ARE OBSTRUCTIONS

Areas considered as obstructions are specified in Appendix RACING AREAS.

12. THE START

12.1 The starting line will be between a staff displaying an orange flag on the race committee boat at the starboard end and the course side of the starting mark at the port end.

12.2 For slalom courses, RRS 26 is modified as follows:





<i>Minutes before the starting signal</i>	<i>Visual signal</i>	<i>Sound signal</i>	<i>Meaning</i>
3	Class flag (WASZP)	One	Warning signal
2	Preparatory flag hoisted	One	Preparatory signal
1	Preparatory flag lowered	Long one	One minute
0	Class flag lowered	One	Starting signal

12.3 [DP] [NP] Boats in waiting: boats whose warning signal has not been made must avoid the starting area during the starting procedure for other boats.

12.4 A boat that does not start within the starting window specified in SI 16.1 and 16.2 will be scored DNS without a hearing (this changes RRS A5.1 and A5.2).

13. CHANGE OF THE NEXT LEG OF THE COURSE

There will be no change of course leg.

14. THE FINISH

14.1 The finishing line will be between a staff displaying a blue flag and the course side of the finishing mark.

14.2 Championship course - Grand Prix Finish: When the first boat finishes the course and crosses the finish line, the race committee will immediately display the yellow flag with a sound signal on the committee boat and on the mark boat at the leeward gate. The blue flag and the yellow flag will be lowered at the end of the finish window or when the last boat has finished. When the first boat finishes the course and crosses the finish line, all boats finishing the course within the time limit will be considered as having finished, regardless of the number of laps they have completed. Their position in the race will be determined from the order of arrival and the number of laps completed. Boats that have completed 3 laps will be ranked ahead of boats that have completed 2 laps. Boats that have completed 2 laps will be ranked ahead of boats that have completed 1 lap. Boats that have completed 1 lap will be ranked ahead of boats that have completed 0 laps. Competitors not crossing the finish line before it closes will be ranked according to their last passage at the windward mark. Competitors who have not managed to round the windward marks once will be ranked DNF. The final ranking is done by comparing the order of arrival and the number of windward mark passages. This modifies RRS 28.1, A5.1, and A5.2.

14.3 [DP] After finishing, boats shall continue to sail at least 200m before stopping and avoid sailing near where boats are racing.

15. PENALTY SYSTEM

15.1 RRS 44.1 and P2.1 is changed so that the Two-Turns Penalty is replaced by the One-Turn Penalty.

15.2 RRS P2.2 and P2.3 do not apply.

15.3 RRS P2.1 applies.

15.4 RRS P5 does not apply.





16. TIME LIMITS AND TARGET TIMES

16.1 championship courses :

Target time	Starting window	Time limit for the first boat to pass at mark 1	Maximum race time for the first boat	Finishing window
20 mn	4 mn	10 mn	40 mn	15 mn

If no boat has passed mark 1 within the time limit, the race will be canceled.

16.2 Slalom courses

Target time	Starting window	Maximum race time for the first boat	Finishing window
8 mn	1 mn	15 mn	8 mn

The finishing window is the time limit for boats to finish after the first boat sails the course and finishes.

16.3 A boat failing to finish within the time limit will be scored DNF without a hearing. This modifies RRS 35, A5.1, and A5.2.

16.4 Failure to meet the Target Time will not be grounds for redress.

17. HEARING REQUESTS

17.1 The protest time limit is 60 minutes after the last boat finishes the last race of the day, or after the race committee signals no more racing for the day, whichever is later. The time will be posted.

17.2 The hearing request forms are available at the jury office, located at the Yacht Club of La Grande Motte, in the regatta office or online from the following link: <https://drive.google.com/drive/folders/1CXF1i61-0a9AQsGFs3BB94aeWtSqapcX?usp=sharing>

17.3 Notices will be posted in the WhatsApp group as per IC2 provisions no later than 30 minutes after the protest time limit to inform competitors of the instructions in which they are parties or called as witnesses. The instructions will take place in the jury room, located at YCC. They will commence at the time specified in the official notice. 17.4 A list of boats that have been penalized under Appendix P for breaking RRS 42 will be posted.

17.5 Breaches of SIs marked [NP] or [SP] will not be grounds for a protest by a boat. This changes RRS 60.1(a).

17.6 Penalties for breaches of SIs marked [DP] are at the discretion of the protest committee and may be less than disqualification if justified.

17.7 On the last scheduled day of racing, a request for reopening a hearing must be delivered:

- (a) within the protest time limit if the requesting party was informed of the decision on the previous day;
- (b) no later than 30 minutes after the requesting party was informed of the decision on that day.

This changes RRS 66.2.





17.8 On the last scheduled day of racing, a request for redress based on a jury decision must be delivered no later than 30 minutes after the decision was posted. This changes RRS 62.2.

18. SCORING

18.1 Scoring of the Slalom:

The points of the slalom will not be counted in the ranking of the championship.

18.2 Two (2) races are required to be completed to constitute a series.

18.3 The series will be scored as follows.

- When fewer than 3 races have been completed, a boat's series score will be the total of her race scores.
- When from 3 to 8 races have been completed, a boat's series score will be the total of her race scores excluding her worst score.
- When 9 or more races have been completed, a boat's series score will be the total of her race scores excluding her two worst scores.

19. SAFETY REGULATIONS

19.1 [DP] [NP] A boat that retires from a race must notify the race committee as soon as possible.

19.2 The VHF safety channel is channel 72.

20. REPLACEMENT OF EQUIPMENT

[DP] Substitution of damaged or lost equipment will not be allowed unless approved by the race committee. Requests for substitution must be made to the committee at the first reasonable opportunity.

21. EQUIPMENT AND MEASUREMENT CHECKS

Not applicable.

22. OFFICIAL BOATS

Official boats will be marked as follows:

Official Safety boats :

Support boats :

23. SUPPORT BOATS

23.1 [DP] [NP] Support boats must register with the organizing authority before the first day of racing and provide the information requested by the Organizing Authority.

23.2 [DP] [NP] Support boats must stay outside areas where boats are racing from the time of the preparatory signal for the first class to start until all boats have finished or the race committee signals a postponement, general recall, or abandonment.





23.3 [DP] [NP] Support boats will be marked by a flag <à définir>.

23.4 The regulations governing the conditions of intervention of chaperones in FFVoile competitions will apply.

24. TRASH DISPOSAL

Trash may be placed aboard support or official boats.

25. PRIZES

Prizes will be awarded to the top three in the rankings defined in the Notice of Race.

Three titles will be awarded:

- A title of French WASZP Champion
- A title of French WASZP Vice-Champion
- A title of 3rd place in the French WASZP Championship

Race officials appointed:

Race Committee chairman : Alain FICHOU

Race committee secretary : Marie-Madeleine FICHOU

Jury chairman : Philippe FERNANDEZ

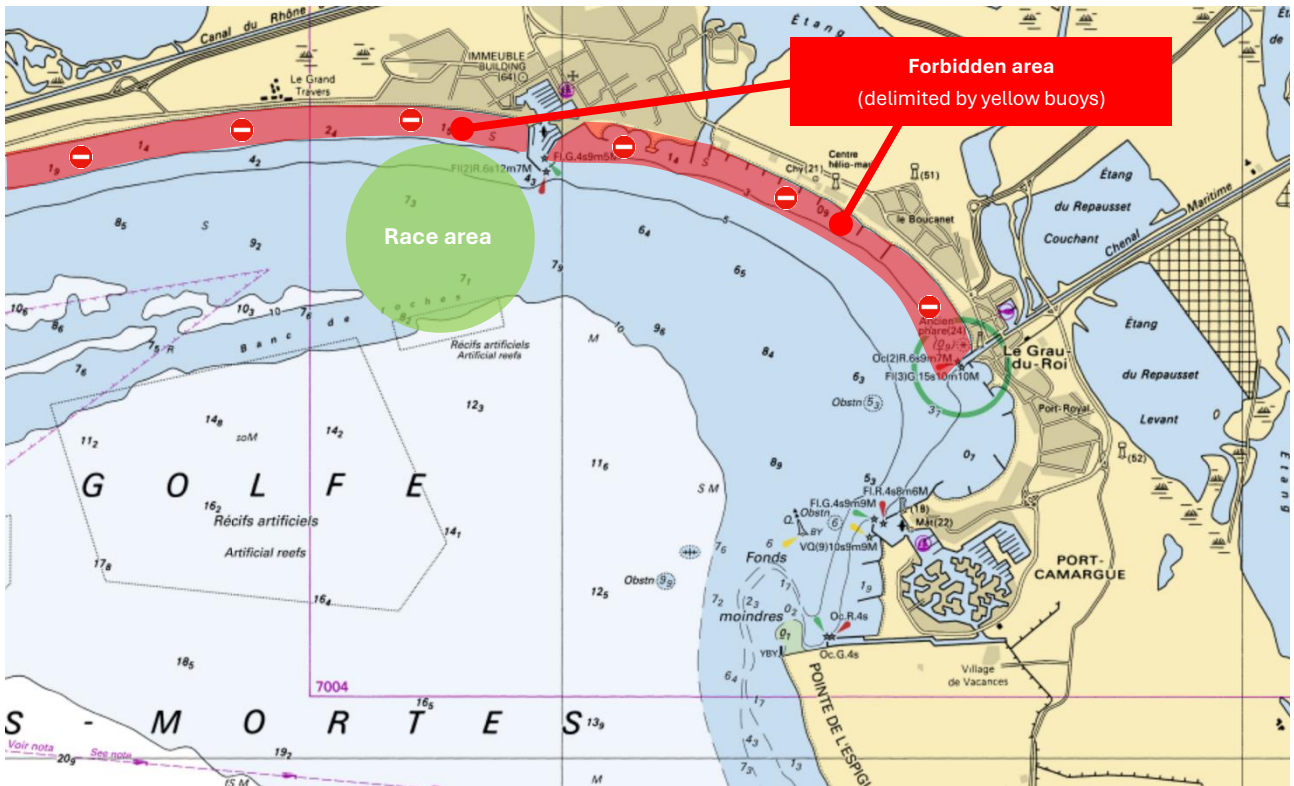
Jury Assessor : Alain GOUJON





APPENDIX RACE AREA

Marine chart describing the location of the racing area specify areas that are obstacles



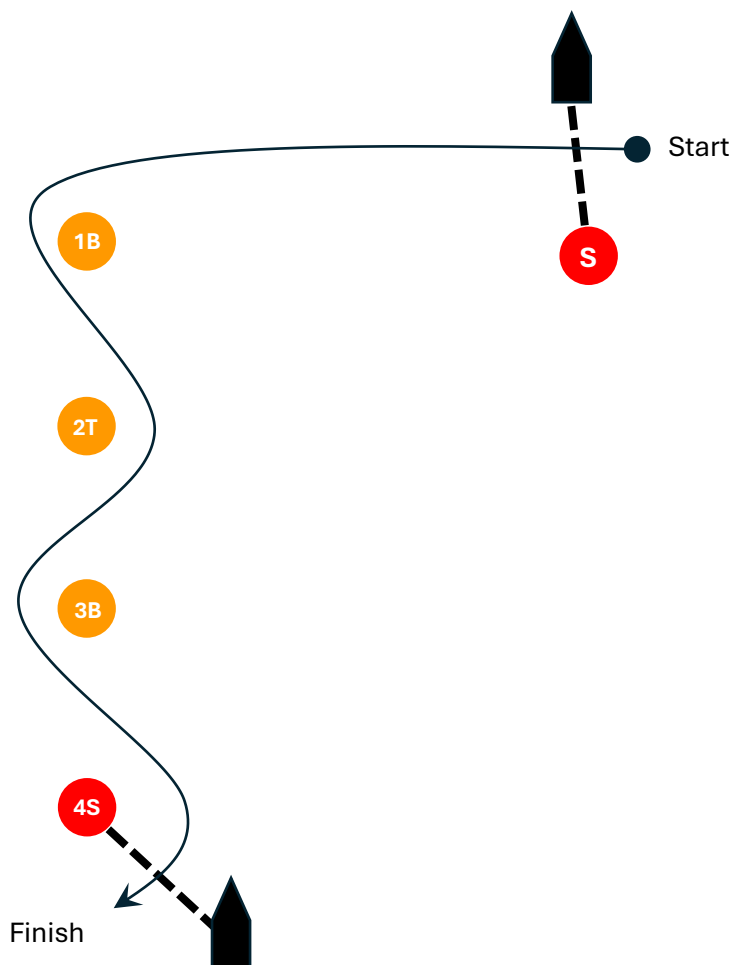


APPENDIX SLALOM RACE

SLALOM RACE : Start – 1P – 2S – 3P – 4S – Finish

Description of course marks

S (Start)	1P	2S	3P	4S





APPENDIX CHAMPIONSHIP RACE

COURSE 1 – numeral flag 1 : Start – 1P/1S – 2P - Finish

COURSE 2 – numeral flag 2 : Start – 1P/1S – 2P/2S – 1P/1S – 2P - Finish

COURSE 3 – numeral flag 3 : Start – 1P/1S – 2P/2S – 1P/1S – 2P/2S – 1P/1S – 2P – Finish

Description of the course marks

S (Start)	1P / 1S	2P / 2S	F (Finish)

