



WASZP Queensland State Championships

28 – 29 October 2023

SAILING INSTRUCTIONS

Organising Authority

ROYAL QUEENSLAND YACHT SQUADRON LTD

578 Royal Esplanade, Manly, QLD 4179

In conjunction with the WASZP Sailing Association of Australia

The notation '[NP]' in a rule of the sailing instructions (SIs) means that a boat may not protest another boat for breaking that rule. This changes RRS 60.1(a).

The notation '[DP]' in a rule of the sailing instructions (SI's) means that a protest committee can award a penalty less than disqualification (including no penalty) at their discretion. This changes Rule 64.2

1. RULES

- 1.1. The event is governed by the rules as defined in The Racing Rules of Sailing) except as altered by the Notice of Race (NOR), SIs and/or WASZP Class rules.
- 1.2. The WASZP Class rules apply.
 - 1.2.1. Consistent with C.5.2, WSAA (as the relevant NCA) has mandated helmets.
 - 1.2.2. This is a Tier 3 event.
- 1.3. Appendix T – Arbitration will apply.
- 1.4. The Australian Sailing Special Regulations Part 2 apply.
- 1.5. Where there is a difference between the NoR and the SIs, the SIs take precedence.
- 1.6. Competitors must follow Club Policies (<https://www.rqys.com.au/policiesanddocuments/>)

2. CHANGES TO SAILING INSTRUCTIONS

- 2.1. Any change to the SIs will be posted before 0900 on the day it will take effect, except that any change to the schedule of races will be posted by 2000 on the day before it will take effect.

3. COMMUNICATIONS WITH COMPETITORS

- 3.1. Notices to competitors will be posted on the official notice board (ONB) located at <https://racehub.waszp.com/events>.
- 3.2. A Whatsapp Group may be used for timely non-official communication; this does not substitute for the ONB. The link for this may be published on the Event page of RaceHub.
- 3.3. [DP] While racing, except in an emergency, a boat shall not make voice or data transmissions and shall not receive voice or data communication that is not available to all boats.
- 3.2. The race office is located at The RQYS Sailing Office adjacent to the Main Rigging Lawn, telephone +617 3396 8666, email sailing@rqys.com.au .

4. CODE OF CONDUCT

- 4.1. [DP] Competitors and support persons shall comply with reasonable official requests.
- 4.2. [DP] Competitors and support persons shall handle any equipment or place advertising provided by the Organising Authority (OA) with care, seamanship, in accordance with any instructions for its use and without interfering with its functionality.

5. SIGNALS MADE ASHORE

- 5.1. Signals made ashore will be displayed at the official flag pole located at the top of the Eastern Gangway of the Bill Kirby Docks.
- 5.2. When flag AP is displayed ashore, '1 minute' is replaced with 'not less than 45 minutes' in Race Signals AP.

6. SCHEDULE OF RACES

6.1. Schedule of activities

DATE	ACTIVITY	TIME
Sat 28 October	Competitor Briefing	1030 hrs
	First Warning	1200 hrs
Sun 29 October	First Warning	1100 hrs
	Presentation	Approximately 60 - 90 minutes after the protest time limit

6.2. A maximum of five (5) Championship races will be sailed on any day.

6.3. A maximum of eight (8) Championship races are scheduled for the regatta.

6.4. On the last scheduled day of racing, no warning signal will be made after 1500 hrs.

7. CLASS FLAGS

7.1. The Class flag is a black WASZP insignia on a pink / purple background.

8. RACING AREA

8.1. SI Attachment A shows the location of the racing areas.

8.1.1. Racing on Saturday is scheduled to be conducted in "Northern Course Area".

8.1.2. Racing on Sunday is scheduled to be conducted in "Southern Course Area".

9. COURSES

9.1. Championship Racing will be on windward/leeward courses with a single windward mark and leeward gate. See SI Attachment B (*Note Saturday & Sunday courses have minor changes*).

9.2. If any gate mark is not laid, the mark that is laid shall be rounded to port.

9.3. No later than the warning signal, the Race Committee boat will display the course to be sailed and the approximate compass bearing of the first leg.

9.4. The course will not be changed during a Championship Race.

10. MARKS

10.1. Marks are as describe in SI Attachment B.

10.2. If one of the gate marks is missing then the remaining mark shall be left to port.

11. THE START AND THE FINISH

11.1. To alert boats that a race or sequence of races will begin soon, the orange start line flag will be displayed with one sound at least three minutes before a warning signal is made.

11.2. Boats whose warning signal has not been made shall avoid the starting area during the start sequence for other races.

11.3. The start line will be between an orange flag on the Race Committee boat and the Start Mark (see SI Attachment B).

11.4. All races will be started using RRS 26, modified as follows:

Signal	Flag Movement	Sound Signal	Minutes
Warning	WASZP Class Flag displayed	1	3
Preparatory	P, U or Black Flag displayed	1	2
One-minute	Preparatory Flag removed	1 long	1
Starting	Class Flag removed	1	0

11.5. A boat that does not start within three minutes of her starting signal will be scored Did Not Start without a hearing. This changes RRS A5.1 and A5.2.

11.6. The finish line will be between a blue flag on the Race Committee boat and the Finish Mark (see SI Attachment B).

11.7. Refer to SI Attachment C for description of the Grand Prix Finish.

12. PENALTY SYSTEM

12.1. The two-turns penalty in RRS 44.1 is replaced by a part-turn penalty where the incident occurs outside the zone. A part turn penalty consists of a gybe and coming to close-hauled when on a windward leg or a tack and sailing below 90 degrees when on any other leg.

13. TIME LIMITS AND TARGET TIMES

13.1. The Mark 1 Time Limit, Race Time Limit (see RRS 35), and the Finishing Window are shown in the table below.

Target Time	Mark 1 Time Limit	Race Time Limit	Finishing Window
20 Minutes	10 minutes	35 minutes	10 minutes

13.2. If no boat has passed the first mark within the Mark 1 Time Limit, the race will be abandoned.

13.3. If no boat Finishes within the Race Time Limit, the race will be abandoned.

13.4. Operation of the Finishing Window is set out in SI Attachment C.

13.5. Failure to meet the Target Time will not be grounds for redress. This changes RRS 62.1(a).

14. HEARING REQUESTS

14.1. Protest forms are available from the Sailing Office. Protests and requests for redress or reopening shall be delivered there within the appropriate time limit.

14.2. The protest time limit is 1 hour after the last boat has finished the last race of the session or the race committee signals no more racing today, whichever is later. The time will be posted on the official notice board.

14.3. Notices will be posted no later than 15 minutes after the protest time limit to inform competitors of hearings in which they are parties or names as witnesses and where the hearings will be held.

14.4. Notices of protests by the race committee or protest committee will be posted to inform boats under RRS 61.1(b).

14.5. On the last scheduled day of racing, a request for redress based on a protest committee decision shall be delivered no later than 15 minutes after the decision was posted.

15. SCORING

- 15.1. Three completed Championship races are required to constitute a series.
- 15.2. Discards:
 - 15.2.1. When fewer than 4 Championship races have been completed, a boat's series score shall be the total of the boats' race scores.
 - 15.2.2. When 4 to 7 Championship races have been completed, a boat's series score shall be the total of the boats' race scores excluding the boats' worst score.
 - 15.2.3. When 8 Championship races have been completed, a boat's series score shall be the total of the boats' race scores excluding the boats' two worst scores.
- 15.3. Rule A5.3 applies.

16. SAFETY REGULATIONS [DP][NP]

- 16.1. All skippers shall Sign On before racing each day and Sign Off at the earliest possible time after the completion of racing (but not later than the end of protest time).
 - 16.1.1. Sign on / sign off sheet will be available near the Sailing Office and Rigging Lawn 2.
 - 16.1.2. Penalty; 5 places without resulting in a score worse than DSQ, without a hearing (amends RRS 63.1) applied to the race nearest the offence.
- 16.2. A safety boat in close attendance to a craft or competitor in difficulty is an Obstruction.
- 16.3. Boats shall follow the instructions of Safety boats. Failure to do so will be reported to the Race Committee, which may protest the boat. Boats penalised under this instruction may be scored DNE, or such other penalty that the Protest Committee may decide. This changes rule 64.1(a).
- 16.4. Outside help shall be reported to the Protest Committee on a form available from the race office before the protest time limit of that session.
- 16.5. All Maritime Queensland Aquatic Event conditions must be followed including:
 - 16.5.1. All competitors are not to impede power driven vessels traversing Manly Boat Harbour and associated channels.
 - 16.5.2. All competitors are to obey the gazetted speed limit in Manly Boat Harbour (6 knots).
- 16.6. No sailing vessel shall berth on or impeded traffic to/from the RQYS fuel dock with out permission from the RQYS Sailing or Marina Office.
- 16.7. A boat that retires from a race shall notify the race committee at the first reasonable opportunity.

17. REPLACEMENT OF CREW OR EQUIPMENT

- 17.1. [DP] Substitution of competitors is not allowed.
- 17.2. [DP] Competitors attention is drawn to Class Rule D.3.5.

18. EQUIPMENT AND MEASUREMENT CHECKS

- 18.1. A boat or equipment may be inspected at any time for compliance with the class rules, notice of race and/or sailing instructions.
- 18.2. [DP] When instructed by a race official on the water, a boat shall proceed to a designated area for inspection.

19. OFFICIAL VESSELS

- 19.1. Official vessels will be identified by display of a white flag with black "RC" or red "MEDIA".

20. [DP] SUPPORT TEAMS & COACHES

- 20.1. Team leaders, coaches and other support persons shall stay outside areas where boats are racing from the time of the preparatory signal for the first start until all boats have finished or retired or the race committee signals a postponement, general recall or abandonment.
- 20.2. All support teams shall monitor the Race Officers nominated VHF channel for race committee communications.
- 20.3. All coaches and support teams shall render assistance when and as directed by the Race Officer.
- 20.4. When the Race Committee boat displays code flag 'W', all support boats must remain on water and provide safety assistance until code flag 'W' is lowered. The Race Officer will endeavour to notify support boats by radio when code flag 'W' is hoisted or lowered.

21. TRASH DISPOSAL

- 21.1. Trash may be placed aboard official or support person vessels.

22. BERTHING / STORAGE

- 22.1. [DP] Boats shall be kept in their assigned places while in the boat park.
- 22.2. Restrictions may be placed on where vessels may be stored or rigged by the RQYS Sailing or Marina office.
- 22.3. No tie down restraints may penetrate the ground deeper than 300mm due to lawn irrigation systems.

23. PRIZES

- 23.1. Prizes may be given as follows:
 - 23.1.1. The State Champion; highest placed resident of the state
 - 23.1.2. First, second and third overall
 - 23.1.3. First Senior (including Apprentice, Master, Super Master as categorised on RaceHub on the day of registration)
 - 23.1.4. First in each classification; Female, 6.9 rig
- 23.2. Other prizes may be awarded at the discretion of the OA.

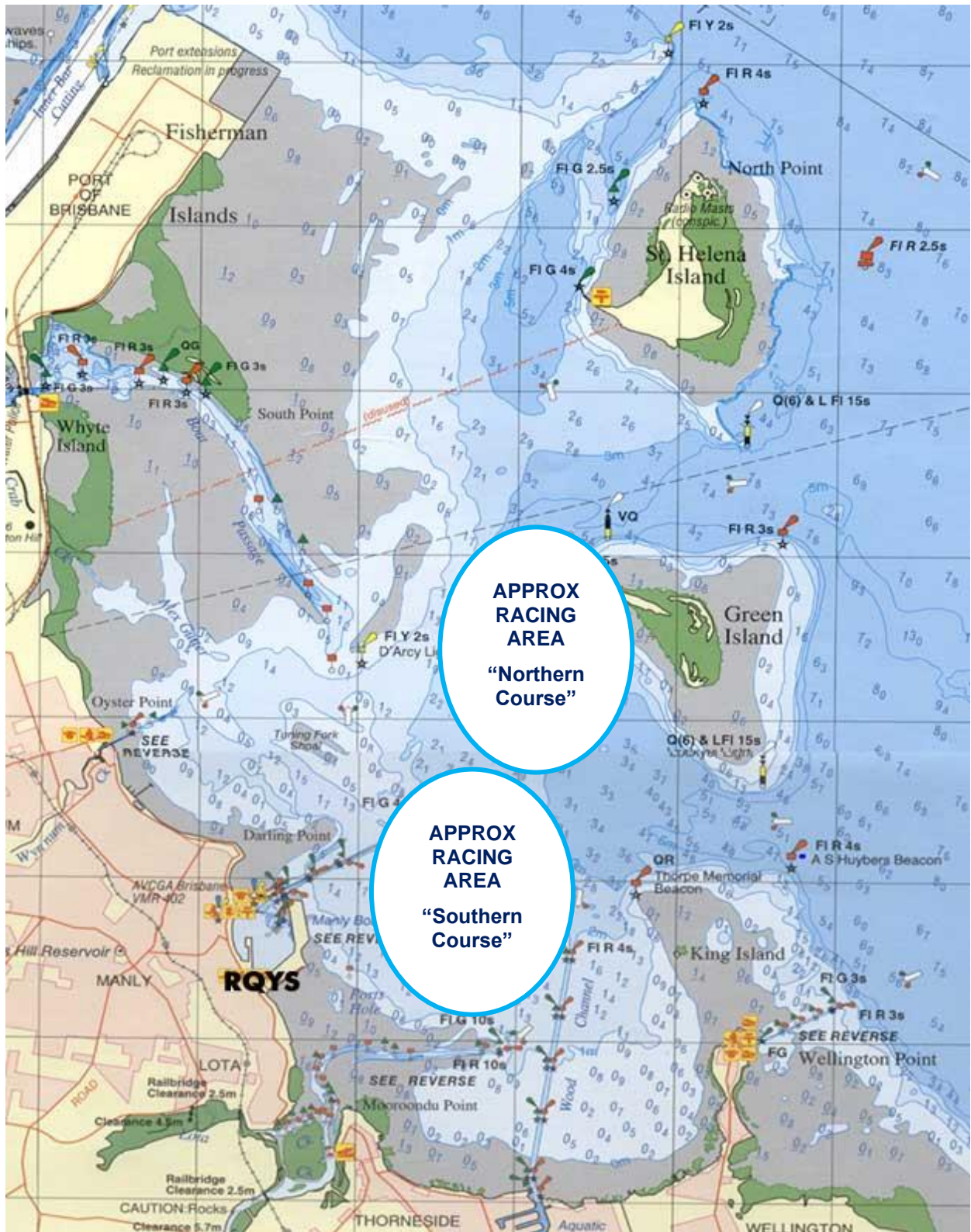
24. RISK STATEMENT

- 24.1. RRS 3 states: 'The responsibility for a boat's decision to participate in a race or to continue to race is hers alone.' By participating in this event each competitor agrees and acknowledges that sailing is a potentially dangerous activity with inherent risks. These risks include strong winds and rough seas, sudden changes in weather, failure of equipment, boat handling errors, poor seamanship by other boats, loss of balance on an unstable platform and fatigue resulting in increased risk of injury. **Inherent in the sport of sailing is the risk of permanent, catastrophic injury or death by drowning, trauma, hypothermia or other causes.**
- 24.2. All participants are required to comply with any safety provisions as mandated under the Racing Rules of Sailing, the Australian Sailing Special Regulations Part 2 for Off The Beach Boats, and any Class Rules that may apply. The Squadron encourages and supports competitors who believe it is appropriate to exceed the above requirements (such as the wearing of helmets, body armor, impact vests, etc.) if they or their guardian believe that conditions and their personal circumstances warrant. All competitor's attention is drawn to the Risk Statement - Section 24 of the Sailing Instructions.

25. INSURANCE

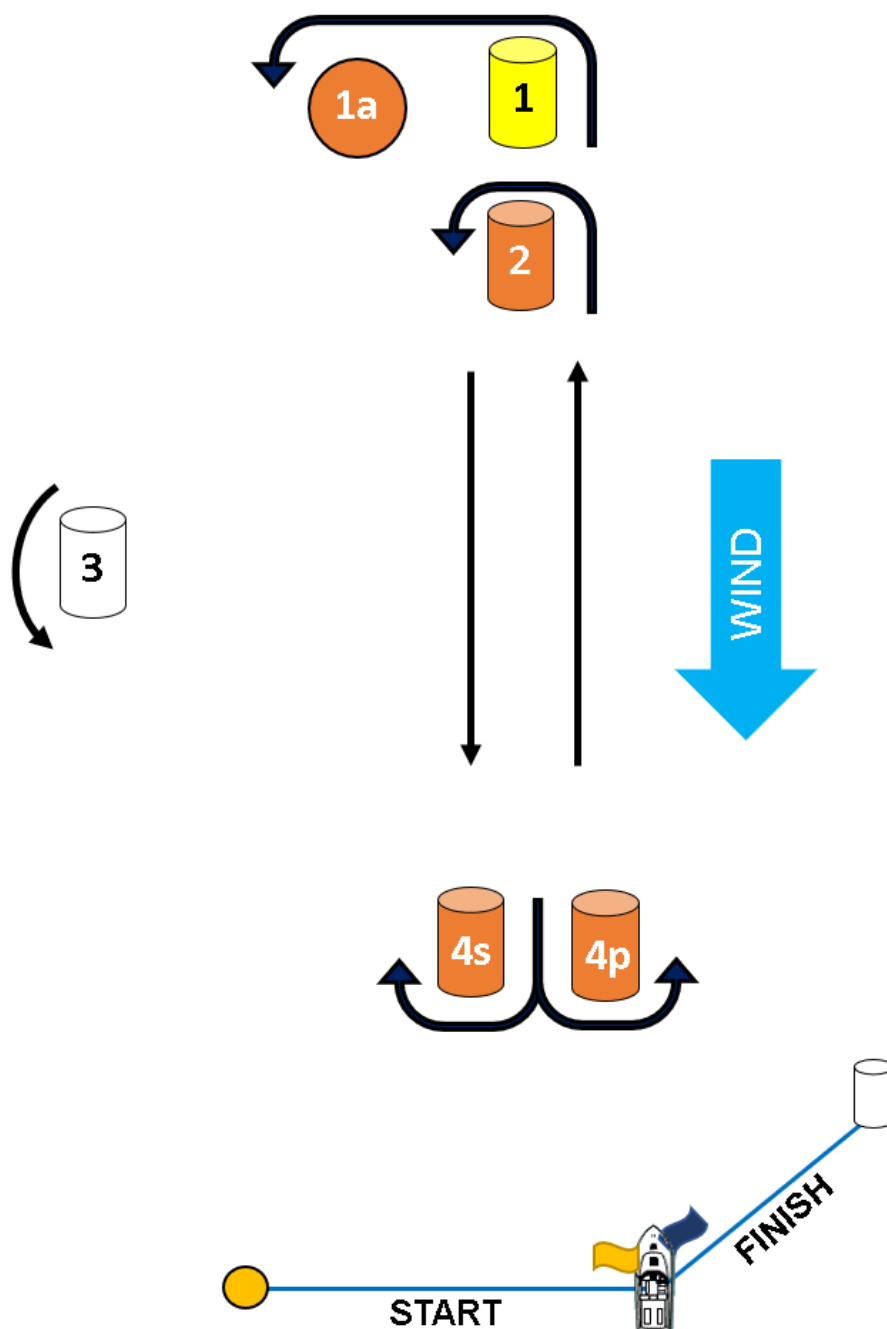
- 25.1. Each participating boat shall be insured with valid third-party liability insurance with a minimum cover of \$10,000,000AUD per incident or the equivalent.

SI ATTACHMENT A – Race Area



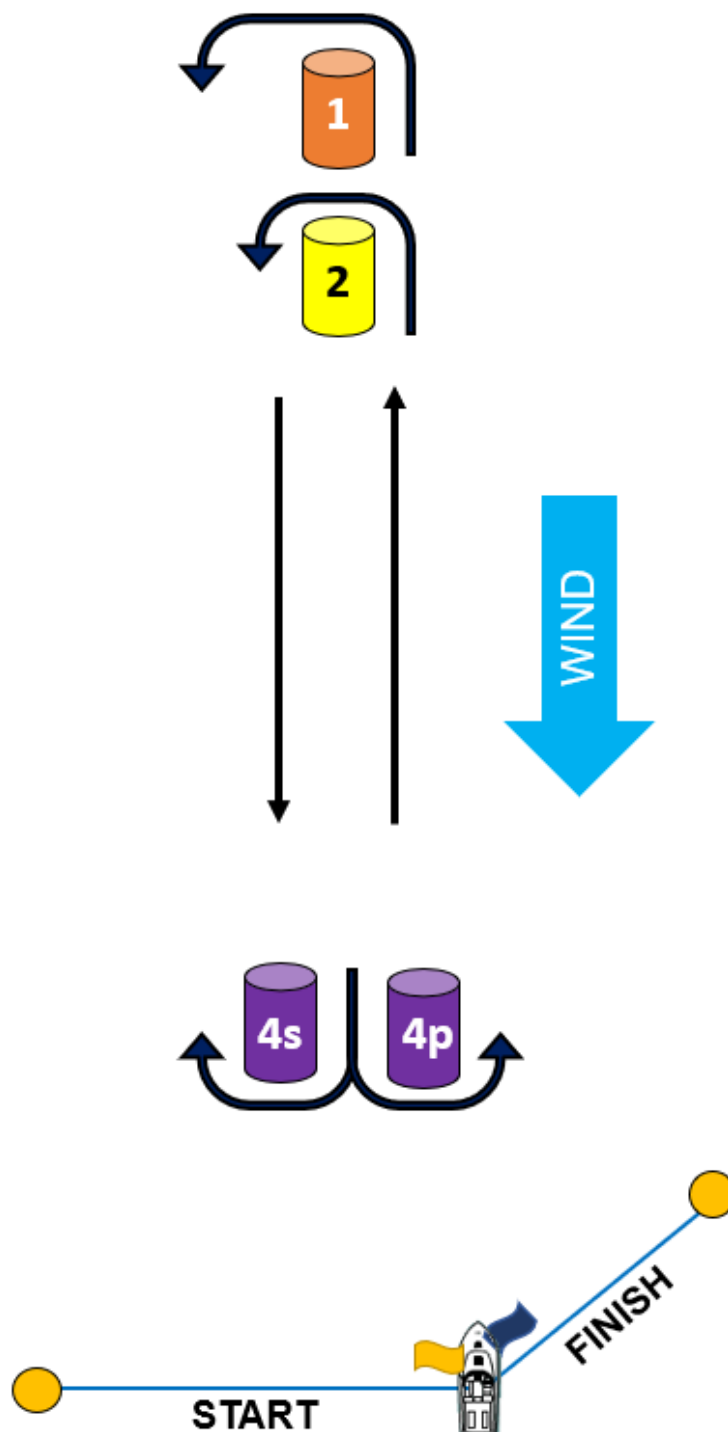
SI ATTACHMENT B – Saturday Course

CODE	COURSE	MARKS DESCRIPTION
LA1	Start – 1 – 1a – 4p – Finish	Marks 1: Yellow Inflatable
LA2	Start – 1 – 1a – 4s/4p – 1 – 1a – 4p – Finish	Mark 2, 4s/4p: Orange Inflatables
LA3	Start – 1 – 1a – 4s/4p – 1 – 1a – 4s/4p – 1 – 1a – 4p – Finish	Start Pin & 1a: Orange teardrop
Note: Course is shared with RQYS Club racing thus course contains "unused marks" for WASZPS.		Mark 3 & Finish Pin: White Inflatable
		Change Mark: Mark 1: Green Inflatable Mark 2: Purple Inflatable



Sunday Course

CODE	COURSE	MARKS DESCRIPTION
LA1	Start – 1 – 4p – Finish	Marks 1: Orange Inflatable
LA2	Start – 1 – 4s/4p – 1 – 4p – Finish	Mark 2: Yellow Inflatables
LA3	Start – 1 – 4s/4p – 1 – 4s/4p – 1 – 4p – Finish	4s/4p: Purple Inflatable
L1	Start – 2 – 4p – Finish	Start & Finish Pin: Orange Teardrop
L2	Start – 2 – 4s/4p – 2 – 4p – Finish	Change Mark:
L3	Start – 2 – 4s/4p – 2 – 4s/4p – 2 – 4p – Finish	Mark 1: White Inflatable Mark 2: Purple Inflatable



SI ATTACHMENT C – Grand Prix Finish

For Championship Races:

- a) Each race will consist of the number of laps designated by the course signal displayed as part of the starting sequence.
- b) A lap consists of:
 - Lap 1; sailing from the start, around Mark 1 and through Gate 2.
 - Subsequent laps; sailing from Gate 2, around Mark 1 and through Gate 2
- c) After completing the required number of laps, boats shall Finish between the Race Committee Boat displaying a blue flag and the finish mark (see Course Map).
- d) When the first boat completes the course and Finishes correctly, the Race Committee Boat shall display a red, black and white FINISH flag with a sound signal. This indicates that the Finishing Window is open.
- e) All boats shall continue sailing the course and when are next completing a lap shall round Mark 2p and proceed to Finish regardless of the number of laps they have completed.
- f) All boats crossing the finish line while the Finish Window is open will be deemed to have Finished. Their race result will be determined from the finishing order and number of laps they correctly completed; those having completed the most laps being ahead of those with fewer laps completed. For example, boats with 2 laps completed will be ranked ahead those with 1 lap.
- g) To indicate the Finishing Window is closed, the FINISH flag will be removed at the earlier of all boats Finishing or the expiry of the Finishing Window time limit.
- h) Boats not Finishing while the Finishing Window is open, will be scored after those Finishing. These boats will be scored according to their relative positions and number of laps completed as they last passed through Gate 2.
- i) Boats who have not completed one lap by the time the Finishing Window closes shall be scored Did Not Finish without a hearing. This changes RRS 35, A4 and A5.
- j) Until the Finishing Window closes, competitors are not to pass through the Finishing Line unless Finishing.

SI ATTACHMENT D – WSAA Light Air Guidance to Race Officers

WASZP Championship Races should be predominantly in foiling conditions.

To achieve this, Race Officers are requested to use their judgement within the following guidelines:

- a) Championship Races should not be started when it appears that less than 50% of the race distance will be foiling by the average competitor.
- b) A race completed where less than 25% of the race distance was foiling shall be considered a “Low Riding Race”.
- c) Once a Low Riding Race has been completed, no further Championship Races should be started unless conditions have changed in line with (a) above.
- d) Ideally, no more than one Low Riding Race should be completed on any Championship Race day.
- e) Completing an event with only Low Riding Races is to be avoided.

Where alternative race formats have been agreed, the warning flag and rounding marks must be distinct from those for the Championship Racing. This is to avoid competitor confusion and potential protests.

It is appropriate to consider an alternative format for non-foiling conditions that keeps the competitors near the starting area and allows the course set up for Championship Racing to remain largely intact. One potential alternative format is a short (~200-300m) multi-lap windward leeward to a single top mark (possibly relaying the finish mark) with the start line as the (wide) leeward gate and finish line.

Alternative format races should be abandoned if foiling conditions take hold; Championship Races should be prioritised.