



# **WASZP**

## **Victorian Slalom Championships**

# **Sailing Instructions**

**8<sup>th</sup> & 9<sup>th</sup> October 2022**

**Organising Authority:**

Royal Brighton Yacht Club (RBYC)

**In conjunction with:**

Waszp Sailing Association of Australia (WSAA)

## **1. RULES**

- 1.1 The regatta will be governed by the rules as defined in The Racing Rules of Sailing except as any of these is altered by the Notice of Race or by these Sailing Instructions and/or the WASZP Class rules.
- 1.2 The Australian Sailing Prescriptions shall apply to all entries
- 1.3 The Australian Sailing Special Regulations Part 2, Off the Beach Boats, shall apply.
- 1.4 In the event of a conflict between the Notice of Race and the Sailing Instructions, the Sailing Instructions will prevail (this changes RRS 63.7).
- 1.5 RRS Appendix T, Arbitration, will apply.

## **2. NOTICES TO COMPETITORS**

- 2.1 Notices to competitors will be posted on the Official Notice Board which is located on the external wall of the OTB sailing office.

## **3. CHANGES TO SAILING INSTRUCTIONS**

- 3.1 Any *change* to the Sailing Instructions will be posted on the Official Notice Board no later than 45 minutes before the scheduled start time of the race for which it will take effect, except that any change to the schedule of championship races will be posted by 1800 on the day before it will take effect.
- 3.2 Flag 'L' will be displayed from the flagpole in front of the Clubhouse when a notice is displayed. It shall be the responsibility of each boat to obtain any instructions. This flag shall be displayed until the start time of the first race to which the change applies.

## **4. SIGNALS MADE ASHORE**

- 4.1 When postponement signal flag AP is displayed ashore, '1 minute' is replaced with 'not less than 20 minutes' in Race Signal AP.

## **5. [SP, NP] SIGNING ON/OFF**

- 5.1 All boats must "sign on" before leaving the shore and "sign off" as soon as practicable after returning to shore at the completion of the session's racing. The Sign On period will close at the scheduled warning signal time of the first race for that session on that day. Competitors who wish to sign on for subsequent races in that session must advise the Regatta Office.
- 5.2 The sign on/sign off form will be located on the ground floor of the clubhouse.
- 5.3 On water sign-on or sign-off will not be allowed.

## **6. ELIGIBILITY AND ENTRY:**

- 6.1 The regatta is open to the one design Waszp Class
- 6.2 All entries must be current financial members of their respective WASZP Class Association to be eligible to race. Non-members will be scored DNC by the race committee
- 6.3 Eligible boats may enter by completing an online entry at [racehub.waszp.com](http://racehub.waszp.com) and paying the entry in full by 0945hrs on 8<sup>th</sup> October 2022.

## **7. SCHEDULE**

- 7.1 Regatta schedule

Date	Event	Time
Saturday, 8 <sup>th</sup> October 2022	Registration	1000hrs – 1200hrs
	Support boat briefing	1100hrs
	Competitors briefing	1130hrs
	Racing session	1400hrs
Sunday, 9 <sup>th</sup> October 2022	Competitors briefing	1000hrs
	Racing session	1100hrs
	Presentation	After racing

7.2 On the last day of scheduled racing, no warning signal will be made after 1500hrs.

## 8. CLASS FLAG

8.1 Waszp Class flag will be a yellow flag with the Waszp Class Insignia.

## 9. VENUE

9.1 The regatta site will be Royal Brighton Yacht Club; 253 Esplanade, Brighton, Victoria.

9.2 The racing area will be on the waters off RBYC. The race area is illustrated in APPENDIX A

## 10. COURSE

10.1 Start - Gate 1 – Gate 2 – Gate 3 – Finish (SEE APPENDIX B BELOW)

## 11. START

11.1 All races will be started using RRS 26, modified as follows:

Signal	Flag and Sound	Minutes
Warning	Wasp Class Flag, flight colour; 1 sound signal	3
Preparatory	P, U, I, Z or Black Flag; 1 sound signal	2
One-minute	Preparatory Flag removed; 1 sound signal	1
Starting	Wasp Class Flag and flight colour removed; 1 sound signal	0

## 12. MARKS

<b>Start Line</b>	RCV and Orange flag pin mark
<b>GATE 1</b>	Yellow inflatable mark
<b>GATE 2</b>	Yellow inflatable mark
<b>GATE 3</b>	Yellow inflatable mark
<b>GATE 4</b>	Yellow Inflatable mark
<b>Finish Line</b>	RCV and Mark 4

### **13. FORMAT**

- 13.1 There may be two flights if more than 10 entries are received.
- 13.2 The event will consist of up to 12 races.
- 13.3 When less than four races have been completed, a boat's series score will be the total of all her race scores. When four (4) to six (6) races have been completed, a boat's series score will be the total of all her race scores excluding her worst score. When seven (7) to twelve (12) races have been completed, a boat's series score will be the total of all her race scores excluding her worst two (2) scores.
- 13.4 If multiple flights are assigned, the races noted in section 12.2 will constitute a qualifying series. The top 8 sailors at the conclusion of the qualifying series will compete in a finals series consisting of 3 races, whereby points will reset and there will be no discards to determine the final results.
- 13.5 Flights will be chosen by random on Saturday the 8<sup>th</sup>. Each fleet will have either a blue or yellow flag which will be displayed on the start boat to indicate which fleet is in their starting sequence.

### **14. OCS & Time limit**

- 14.1 OCS boats do not need to return to the start but shall go to last place before they continue racing. This changes RRS 28 and 29.
- 14.2 After the first sailor crosses the finish line competitors have 5 minutes to finish the race. After this time any sailors who has not finished will have their positions allocated by the RC based on their positions.

### **15. PENALTIES AT THE TIME OF AN INCIDENT & PROTEST TIME LIMIT**

- 15.1 The two-turns penalty in rule 44.1 is replaced by a part-turn. It is a gybe and coming to close-hauled on a windward leg or a tack and sailing below 90 degrees on any other leg.
- 15.2 Sailors have 60 minutes after the completion of the final race of the day to submit a protest to the race committee.

### **16. SAFETY**

- 16.1 All competitors shall wear a personal flotation device at all times whilst afloat, in good condition and in accordance with the specifications that comply with the Australian Sailing Special Regulations, Part 2 for Off the Beach Boats.
- 16.2 Attention is drawn to Rule 4 that reads: "The responsibility for a boat's decision to participate in a race or to continue racing is hers alone."

### **17. FURTHER INFORMATION:**

For further information please contact:

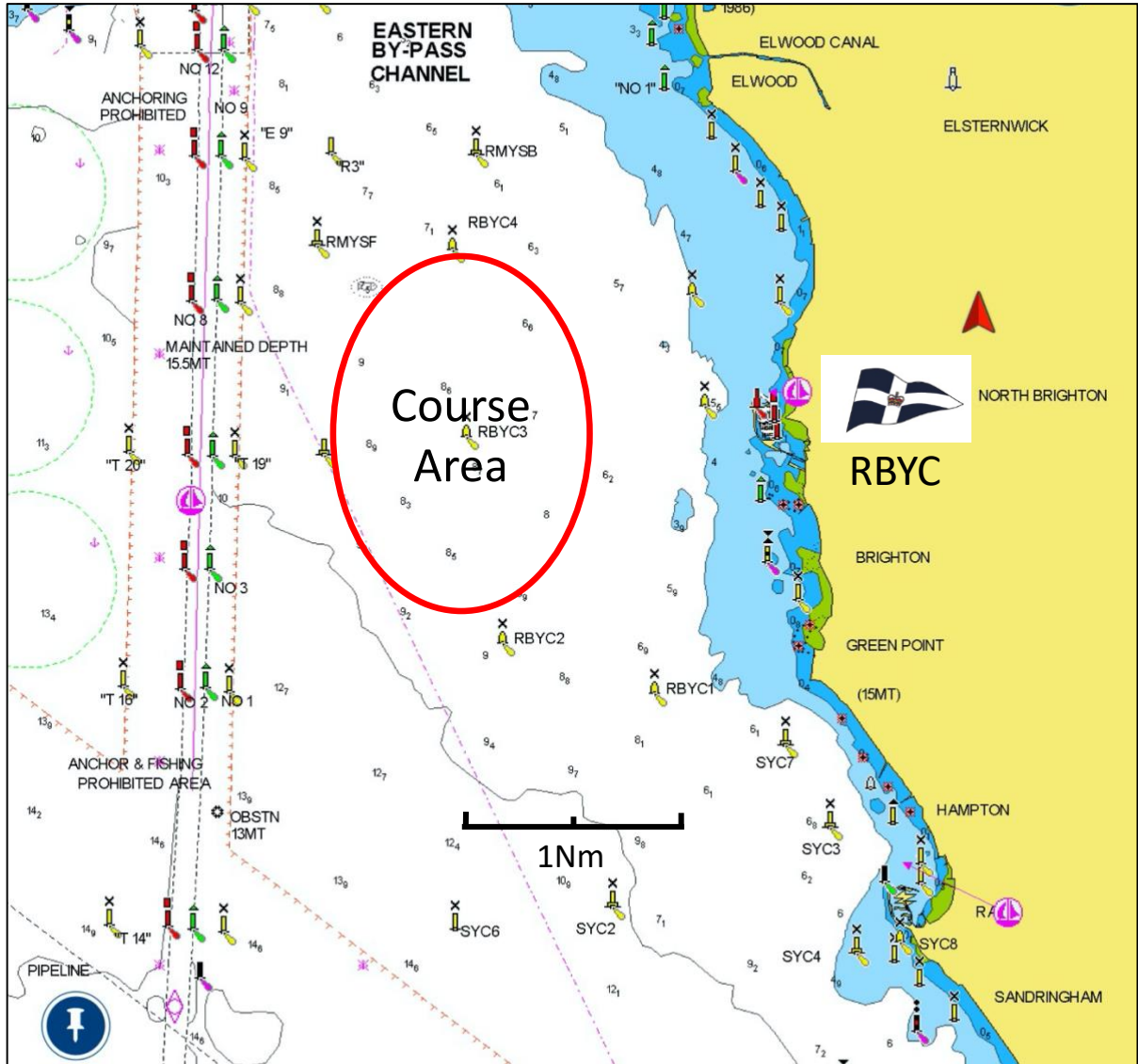
WSAA	Ben Gunther	0438 334 995
RBYC	Colin Burgess	0418 240 313

## **Appendix A** Course Area

**Appendix B** Slalom Course

# Appendix A

## Course Area



## Appendix B Slalom Course

