



**WASZP DERWENT GP**  
WASZP UK CLASS ASSOCIATION  
DERWENT RESERVOIR SAILING CLUB  
21 & 22 MAY  
**SAILING INSTRUCTIONS (SIs)**

*The notation '[NP]' in a rule of the sailing instructions (SIs) means that a boat may not protest another boat for breaking that rule. This changes RRS 60.1(a).*

**1 RULES**

- 1.1 The event is governed by the rules as defined in *The Racing Rules of Sailing*.
- 1.2 Appendix T (Arbitration) will apply.

**2 CHANGES TO SAILING INSTRUCTIONS**

- 2.1 Any change to the sailing instructions will be posted before 0900 on the day it will take effect, except that any change to the schedule of races will be posted by 2000 on the day before it will take effect.

**3 COMMUNICATIONS WITH COMPETITORS**

- 3.1 Notices to competitors will be posted on the official notice board located at <https://racehub.waszp.com/eventdetail/99#notices>.
- 3.2 The race office is located upstairs in the clubhouse.
- 3.3 A WhatsApp group may be used for unofficial communication with competitors. Competitors should refer to the ONB for all official communications.

**4 CODE OF CONDUCT**

- 4.1 [DP] Competitors and support persons shall comply with reasonable requests from race officials.

## **5 SIGNALS MADE ASHORE**

- 5.1 Signals made ashore will be displayed on the club flagpole.
- 5.2 When flag AP is displayed ashore, '1 minute' is replaced with 'not less than 30 minutes' in Race Signals AP.

## **6 SCHEDULE OF RACES**

- 6.1 Four races are scheduled per day.
- 6.2 A maximum of six races may be sailed on any one day.
- 6.3 The scheduled time of the first warning signal is 1155 on 21 May and 1025 on 22 May.
- 6.4 To alert boats that a race or sequence of races will begin soon, the orange starting line flag will be displayed with one sound at least five minutes before a warning signal is made.
- 6.5 On the last scheduled day of racing no warning signal will be made after 1500.

## **7 CLASS FLAGS**

- 7.1 The class flag will be a gold flag displaying the WASZP logo.

## **8 RACING AREA**

- 8.1 The racing area is on Derwent Reservoir, excluding the nature reserve / valve tower areas.

## **9 COURSES**

- 9.1 The diagram(s) in SI Appendix 1 shows the course(s), including the order in which marks are to be passed, and the side on which each mark is to be left.
- 9.2 The course number to be used will be communicated at the morning briefing.
- 9.3 The number of laps to be sailed will be displayed on the committee boat.

## **10 MARKS**

- 10.1 Mark will be tall and orange.

## **11 OBSTRUCTIONS**

- 11.1 A submerged wall is on the south side of the Reservoir lying in the vicinity of Club Mark H. The end of the wall is marked with a small white buoy. Boats shall keep clear of this obstruction at all times.
- 11.2 Boats shall not sail in the nature reserve area to the west of the Reservoir or near the overflow spill way / valve tower at the east of the reservoir. Please see Appendix 2.

## **12 THE START**

- 12.1 The starting line is between the staff displaying the orange flag on the signal vessel at the starboard end and the course side of the port end starting mark.
- 12.2 A boat that does not start within five minutes after her starting signal will be scored DNS without a hearing. This changes RRS A5.1 and A5.2.

## **13 CHANGE OF THE NEXT LEG OF THE COURSE**

- 13.1 To change the next leg of the course, the race committee will move the original mark or the finishing line to a new position.
- 13.2 The Race Committee is not required to signal the change where the next leg of the course is changed by less than 10 degrees in angle or less than 100 metres in length. This changes RRS 33.

## **14 GRAND PRIX FINISH**

- 14.1 Unless shortened in accordance with RRS 32.2(c), the finishing line is between the staff displaying a blue flag on the signal vessel and the course side of mark 2p.
- 14.2 When the first boat sails the course and finishes, all other boats shall complete the lap they are on and cross the finishing line. Boats will be scored according to the number of laps they have sailed and the position they crossed the line, with boats completing a higher number of laps ranked above those that completed fewer laps. This changes RRS 28.1.
- 14.3 A boat that completes at least one lap but does not cross the finishing line within 10 minutes after the lead boat finishes will be scored according to its last known position. This may be ahead of a boat that crosses the finishing line having sailed the same number or fewer laps. This changes RRS 28.1, A5.1 and A5.2.
- 14.4 A boat that fails to complete one lap within 10 minutes after the lead boat finishes will be scored DNF.
- 14.5 If a boat is shown ICS flag W by an official vessel, it shall return to the starting area. That boat will be scored in its last known position. This changes RRS 28.1, A5.1 and A5.2.

## **15 PENALTY SYSTEM**

- 15.1 RRS 44.1 is changed so that the Two-Turns Penalty is replaced by the One-Turn Penalty.

## **16 TIME LIMITS AND TARGET TIMES**

- 16.1 The Mark 1 Time Limit, Race Time Limit (see RRS 35), and the Finishing Window are shown in the table below.

Mark 1 Time Limit	Target Time	Race Time Limit (RRS 35)
15 minutes	20 minutes	40 minutes

16.2 If no boat has passed the first mark within the Mark 1 Time Limit, the race will be abandoned.

16.3 Failure to meet the Target Time will not be grounds for redress.

## **17 HEARING REQUESTS**

17.1 The protest time limit is 60 minutes after the last boat finishes the last race of the day or the race committee signals no more racing today, whichever is later. The time will be posted on the official notice board.

17.2 Hearing request forms are available from the race office.

17.3 Notices will be posted no later than 30 minutes after the protest time limit to inform competitors of hearings in which they are parties or named as witnesses. Hearings will be held in the protest room, located at the race office.

## **18 SCORING**

18.1 3 races are required to be completed to constitute a series.

18.2 The series will be scored as follows:

- a) When fewer than 4 races have been completed, a boat's series score is the total of her race scores.
- b) When from 4 to 7 races have been completed, a boat's series score is the total of her race scores excluding her worst score.
- c) When 8 or more races have been completed, a boat's series score is the total of her race scores excluding her two worst scores.

## **19 SAFETY REGULATIONS**

19.1 [DP] A boat that retires from a race shall notify the race committee at the first reasonable opportunity.

## **20 REPLACEMENT OF CREW OR EQUIPMENT**

In accordance with the class rules.

## **21 EQUIPMENT AND MEASUREMENT CHECKS**

21.1 A boat or equipment may be inspected at any time for compliance with the *rules*.

## **22 SUPPLIED BOATS**

Not applicable to this event.

## **23 OFFICIAL VESSELS**

23.1 Official vessels will be described and pointed out at the competitor briefing.

## **24 SUPPORT VESSELS [DP] [NP]**

24.1 Support vessels are prohibited at the event.

## **25 TRASH DISPOSAL**

25.1 Trash may be placed aboard official or support person vessels.

25.2 [DP] [NP] Trash shall not be discarded into the water.

## **26 BERTHING**

26.1 [DP] [NP] Boats shall be kept in their assigned places while in the boat park.

## **27 HAUL-OUT RESTRICTIONS**

Not applicable to this event.

## **28 DIVING EQUIPMENT AND PLASTIC POOLS**

Not applicable to this event.

## **29 PRIZES**

29.1 Prizes will be given for the following positions. Ages are taken as of 31 December this year:

- 1<sup>st</sup>, 2<sup>nd</sup>, 3<sup>rd</sup> overall
- Age divisions where relevant

## **30 RISK STATEMENT**

30.1 Rule 3 of the Racing Rules of Sailing states: 'The responsibility for a boat's decision to participate in a race or to continue racing is hers alone.'

Sailing is by its nature an unpredictable sport and therefore inherently involves an element of risk. By taking part in the event, each competitor agrees and acknowledges that:

- (a) They are aware of the inherent element of risk involved in the sport and accept responsibility for the exposure of themselves, their crew and their boat to such inherent risk whilst taking part in the event;
- (b) They are responsible for the safety of themselves, their crew, their boat and their other property whether afloat or ashore;
- (c) They accept responsibility for any injury, damage or loss to the extent caused by their own actions or omissions;

- (d) Their boat is in good order, equipped to sail in the event and they are fit to participate;
- (e) The provision of a race management team, patrol boats and other officials and volunteers by the event organizer does not relieve them of their own responsibilities;
- (f) The provision of patrol boat cover is limited to such assistance, particularly in extreme weather conditions, as can be practically provided in the circumstances;
- (g) It is their responsibility to familiarise themselves with any risks specific to this venue or this event drawn to their attention in any rules and information produced for the venue or event and to attend any safety briefing held for the event.

## **31 INSURANCE**

- 31.1 Each participating boat shall be insured with valid third-party liability insurance with a minimum cover of £2 million per incident or the equivalent.

**Appendix 1: Courses**

Course 1



1 LAP	START, 1p/1s (Gate), 2p/FINISH
2 LAPS	START, 1p/1s (Gate), 2s/2p (Gate), 1p/1s (Gate), 2p/FINISH
3 LAPS	START, 1p/1s (Gate), 2s/2p (Gate), 1p/1s (Gate), 2s/2p (Gate), 1p/1s (Gate), 2p/FINISH
4 LAPS	START, 1p/1s (Gate), 2s/2p (Gate), 1p/1s (Gate), 2s/2p (Gate), 1p/1s (Gate), 2s/2p (Gate), 1p/1s (Gate), 2p/FINISH

Course 2



1 LAP	START, 1(p), 1a(p), 2(p), 2p/FINISH
-------	-------------------------------------



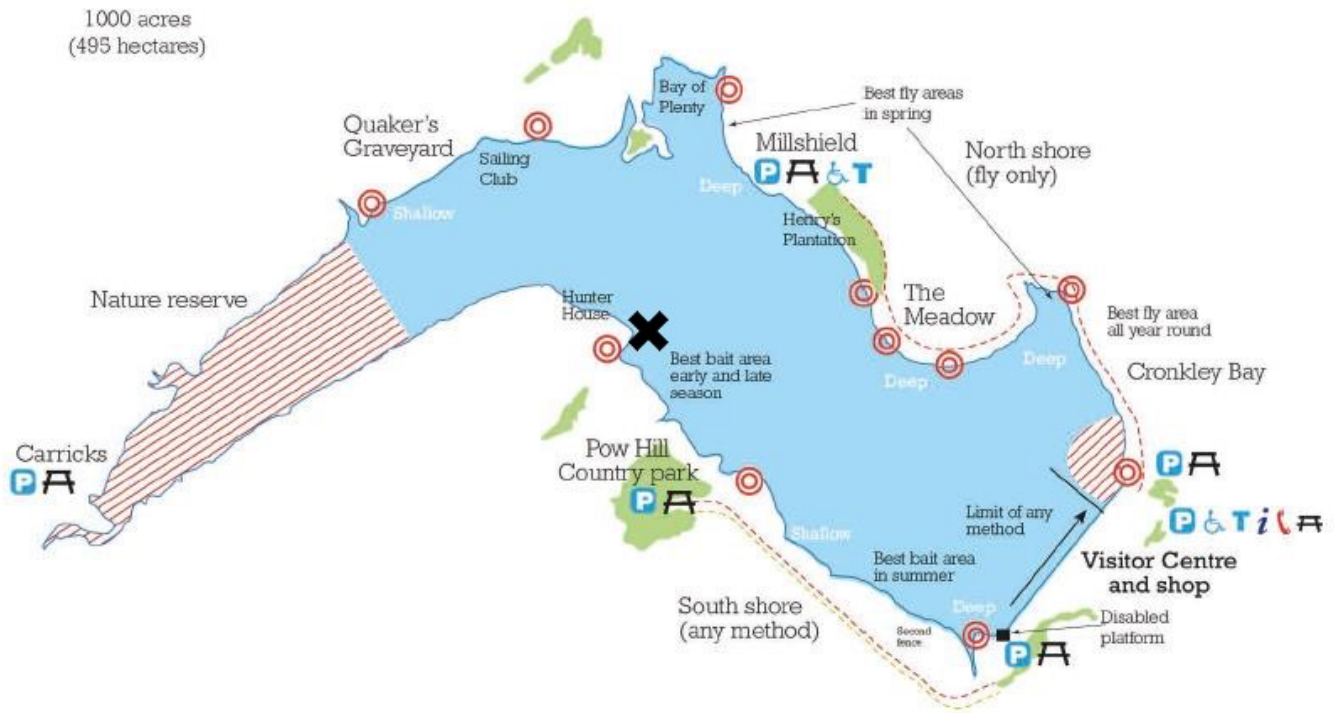
Course 3

1



1 LAP	START, 1(p), 2p(p)/FINISH
-------	---------------------------

## Appendix 2: Map



### KEY

	Life belt		No access		Information		Telephone		Disabled access
	Hidden underwater wall		Toilet		Parking		Picnic area		No fishing at any time