



## **WASZP ASIA PACIFIC CHAMPIONSHIPS 2025/2026**

ROYAL QUEENSLAND YACHT SQUADRON LTD

578 Royal Esplanade, Manly, QLD 4179

6 - 10 January 2026

# **NOTICE OF RACE (NOR)**

***The Organising Authority (OA) is the Royal Queensland Yacht Squadron (RQYS), in conjunction with the WASZP Class (represented by the WASZP International Class Association (WICA) and the WASZP Sailing Association of Australia (WSAA))***

*The notation '[NP]' in a rule means that a boat may not protest another boat for breaking that rule. This changes RRS 60.1.*

## **1 RULES**

- 1.1 The event is governed by the Rules as defined in the current Racing Rules of Sailing.
- 1.2 The Special Regulations of Australian Sailing Part 2 apply (see [AS Regs](#)).
- 1.3 RRS Appendix T (Arbitration; with associated scoring penalties) will apply.
- 1.4 This is a WASZP Class Tier 2 event.
- 1.5 The WASZP Standard Support Vessel Regulations apply (see [SVRs](#)).
- 1.6 RRS 90.3 (e) will apply and the expression "24 hours" is changed to "60 minutes".
- 1.7 Where there is conflict between the Notice of Race (NoR) and the Sailing Instructions (SIs) the SIs take precedence.

## **2 CHANGES TO RACE DOCUMENTS & SCHEDULE**

- 2.1 Any change to the race documents will be posted by 2 hours before the first warning scheduled on the day it will take effect.

## **3 COMMUNICATION**

- 3.1 The Official Notice Board will be online (see [ONB](#)).
- 3.2 As well as participating in the Australian Fleet WhatsApp group (see [link](#)), competitors and supporters should join the following group which will be used for other communications from event administrators (see [link](#)).
- 3.3 The race office is located at The RQYS Sailing Office adjacent to the Main Rigging Lawn (see map grid D6 on Attachment B map and contact information (NOR 20.1)).

## **4 SAILING INSTRUCTIONS**

- 4.1 The Sailing Instructions (SIs) will be available on the ONB prior to the event.

## **5 ELIGIBILITY AND ENTRY**

- 5.1 The event is open to all boats of the WASZP Class.
- 5.2 All competitors shall be a current member of WICA or WSAA (see [membership](#)) or the WASZP association in their country of residence (email [liam@kasail.com](mailto:liam@kasail.com) to complete entry).

- 5.3 Boats shall enter online using the event page (see [RaceHub](#)).
- 5.4 To be considered an entry in the event, a boat shall complete all registration requirements and pay all fees; entry fees by type are set out in the following table.

Entry type	Closing date (11.59pm)	Fee (AUD)	Included in entry	
			Social program	Regatta shirt
<b>Enter now pay later</b>	31 Oct 2025			
<b>Early entry</b>	16 Nov 2025	440	Yes	Yes
<b>Normal entry</b>	16 Dec 2025	500		
<b>Late entry</b>	OA discretion	600		No

- 5.5 A competitor who withdraws in writing before normal entries close will receive a refund of 50% of the fee they paid.

## 6 EVENT FORMAT AND SCORING

- 6.1 All rig sizes will race together sailing a single series of races for the Championship.
- 6.2 The championship series will consist of Windward Leeward racing, a Sprint racing series and a Distance Race with each race format to be described in the SIs.
- 6.3 All race formats will count in the Championship series.
- 6.3.1 Each Windward Leeward race and the Distance Race will count as a single race in the Championship series.
- 6.3.2 The final ranking of the Sprint Racing series will count as a single race in the Championship series (as referenced in 6.4 and 6.5).
- 6.4 Three races are required to be completed to constitute the Championship series.
- 6.5 A boat's Championship series score will be the total of her race scores discarding her worst scores based on the number of races completed with reference to the following table:

Races completed	1 - 3	4 - 7	8 - 11	12 - 15	16+
Discards	0	1	2	3	4

- 6.6 Competitors will be able to submit scoring enquiries at the regatta office.

## 7 PENALTY SYSTEM

- 7.1 RRS 44.1 is replaced with a part-turn penalty where the incident occurs outside the zone. A part turn penalty consists of a gybe and coming to close-hauled when on a windward leg or a tack and sailing below 90 degrees on any other leg.
- 7.2 RRS P2.2 and P2.3 are deleted and P2.1 applies to all penalties under Appendix P.

## 8 MEASUREMENT / EQUIPMENT INSPECTION

- 8.1 A boat or equipment may be inspected at any time for compliance with the rules.
- 8.2 Further details about measurement procedures may be posted on the ONB.
- 8.3 The penalty for infringement of a class rule may be less than disqualification (see [Standard Penalties](#)).

## 9 VENUE

- 9.1 The event will be held from RQYS.
- 9.2 The racing will be on one of the areas indicated in Attachment A.

## 10 SCHEDULE

- 10.1 The table below outlines the provisional schedule for the event:

Day	On Site Activity	Time
4 Jan Sun	<ul style="list-style-type: none"><li>Informal race training</li></ul>	1200 - 1500
5 Jan Mon	<ul style="list-style-type: none"><li>Open Measurement</li><li>Informal race training</li><li>Registration (and measurement by appointment)</li><li>Welcome ceremony with Burger Bar*</li></ul>	0900 - 1500 1200 - 1500 1500 - 1730 1800
6 Jan Tue	<ul style="list-style-type: none"><li>Registration and measurement by appointment</li><li>Support Vessel briefing</li><li>First warning (Windward Leeward)</li><li>Pasta evening*</li></ul>	0930 - 1030 1030 - 1100 1300 After racing
7 Jan Wed	<ul style="list-style-type: none"><li>Town Hall (RQYS Auditorium)</li><li>First warning (Windward Leeward)</li><li>After racing sausage sizzle*</li></ul>	0830 1000 After racing
8 Jan Thu	<ul style="list-style-type: none"><li>First warning (Sprints and Distance)</li><li>Asian evening* with Sprints / Distance prize giving</li></ul>	1000 1800
9 Jan Fri	<ul style="list-style-type: none"><li>First warning (Windward Leeward)</li><li>After racing sausage sizzle*</li></ul>	1000 After racing
10 Jan Sat	<ul style="list-style-type: none"><li>First warning (Windward Leeward)</li><li>Last warning (...no later than...)</li><li>Regatta presentation – with rehydration options</li></ul>	1000 1530 After racing

*Note: Competitor briefing will be held 2 hours before first warning scheduled on each race day*

*\*Item part of Social Program and thus free for each competitor and the person in charge of each registered Support Vessel; additional tickets will be available for other supporters*

- 10.2 Any format of racing may be sailed on any day.
- 10.3 A maximum of five Windward Leeward races may be sailed on one day.

## 11 CODE CONDUCT [DP]

- 11.1 Competitors and support persons shall comply with reasonable requests of race officials and measurers.

## 12 BERTHING [NP]

- 12.1 Boats shall be kept and rigged on the Main Rigging Lawn (see grid reference D5 on the Directory in Attachment B); the RQYS Sailing or Marina Office may place additional restrictions on where boats may be stored or rigged.
- 12.2 Boats may only be stored on the RQYS Main Rigging Lawn for the duration of the event and 24hrs before/after the event, unless otherwise approved by the RQYS Sailing or Marina Office.
- 12.3 Tie down devices must not penetrate the ground deeper than 300mm (due to lawn irrigation systems).

## 13 SUPPORT PERSONS AND VESSELS

- 13.1 Registration of all Support Vessels is required using the Support Boat Registration button on the ONB and paying the registration fee of AUD120. The fee includes the same access to the social program (for one person) as each competitor receives.
- 13.2 During the event's published on-site registration window, the person in charge of each Support Vessel shall attend Registration to complete Support Vessel registration and pay a AUD50 refundable deposit to receive their Support Vessel Identification Flag. Flag return / refund shall be at the Regatta Office by 5pm on the last day of racing.

## 14 PRIZES

- 14.1 Prizes may be awarded for the event as follows:

Category	Sprint	Distance	Overall
Overall	1 <sup>st</sup> / 2 <sup>nd</sup> / 3 <sup>rd</sup>	1 <sup>st</sup> / 2 <sup>nd</sup> / 3 <sup>rd</sup>	1 <sup>st</sup> / 2 <sup>nd</sup> / 3 <sup>rd</sup>
Female (from 7.5s)	1 <sup>st</sup>	1 <sup>st</sup>	1 <sup>st</sup> / 2 <sup>nd</sup> / 3 <sup>rd</sup>
Small Rig	1 <sup>st</sup>	1 <sup>st</sup>	1 <sup>st</sup>
Junior (U19)	1 <sup>st</sup> Youth (U21)	1 <sup>st</sup> Youth (U21)	1 <sup>st</sup>
Youth (U21)			1 <sup>st</sup>
Core	1 <sup>st</sup> Senior	1 <sup>st</sup> Senior	1 <sup>st</sup>
Master			1 <sup>st</sup>
Super Master			1 <sup>st</sup>

- 14.2 Other prizes may be awarded at the discretion of the OA

## 15 ADVERTISING [NP] [DP]

- 15.1 If requested by the OA, boats shall display advertising chosen and supplied by the OA. This may include a requirement to wear bibs at specified times.

## 16 CHARTERED OR LOANED BOATS

16.1 Contact [jervis.tilly@icloud.com](mailto:jervis.tilly@icloud.com), or

16.2 See [Racehub Charters](#)

## 17 INSURANCE

17.1 Each participating boat shall be insured with valid third-party liability insurance with a minimum cover of AUD\$5 million per incident or the equivalent.

## 18 RISK STATEMENT

18.1 RRS 3 states: 'The responsibility for a boat's decision to participate in a race or to continue to race is hers alone.' By participating in this event each competitor agrees and acknowledges that sailing is a potentially dangerous activity with inherent risks. These risks include strong winds and rough seas, sudden changes in weather, failure of equipment, boat handling errors, poor seamanship by other boats, loss of balance on an unstable platform and fatigue resulting in increased risk of injury. Inherent in the sport of sailing is the **risk of permanent, catastrophic injury or death by drowning, trauma, hypothermia or other causes.**

## 19 DATA PROTECTION

19.1 The personal information you provide to the OA will be used to facilitate your participation in the event and will be stored and used in accordance with the OA's privacy policies. To facilitate your participation in the event, or when required by the rules, personal information may be shared with the WASZP Class, event officials, your national governing body, and/or World Sailing. Relevant media, results and the outcome of any hearing or appeal may be published.

## 20 FURTHER INFORMATION

20.1 Club:

RQYS Sailing: +61 7 3396 8666 / [sailing@rqys.com.au](mailto:sailing@rqys.com.au)

578 Royal Esplanade MANLY QLD 4179 AUS

[www.rqys.com.au](http://www.rqys.com.au)

20.2 Class:

Jervis Tilly: +61 449 603 854

[jervis@waszp.com](mailto:jervis@waszp.com)

[illegible]

**APPROX  
RACING  
AREA**  
“Southern  
Course”

# Attachment B - Location Information

## Emergency contacts

### Emergencies

**000**

<b>RQYS Sailing Manager</b>	0424 101 732	
<b>Royal Queensland Yacht Squadron</b>	(07) 3396 8666	578 Royal Esplanade, Manly QLD
<b>Manly Coast Guard</b>	(07) 3396 5911	40 Trafalgar St, Manly QLD
<b>Wynnum Police</b>	(07) 3308 8100	82 Pine St, Wynnum QLD
<b>Wynnum Fire &amp; Rescue</b>	(07) 3396 3297	2006 Wynnum Rd, Wynnum West
<b>Brisbane Water Police</b>	(07) 3895 0333	2 Howard Smith Dr, Port of Brisbane

## Location, access & communication of Next of Kin Details

Sailing Office & SailSys Databases including information gathered from regatta registrations and/or indemnity forms

## Location of Nearest Emergency Medical Facilities

<b>Redlands Hospital</b>	(07) 3488 3111	21 Weippin St, Cleveland QLD
--------------------------	----------------	------------------------------

## Location of Nearest Medical Facilities

Wynnum Family Health Service	(07) 3893 0093	116 Edith St, Wynnum QLD
Doctors on Manly Road	(07) 3348 6111	12 Manly Rd, Manly QLD
Silky Oaks Medical Practice	(07) 3396 9855	218 Manly Rd, Manly QLD
Dental On Cambridge	(07) 3348 6661	4/99 Cambridge Parade, Manly QLD

## Local Services

### Sail Maker

North Sails  
1/264 Tingal Rd, Wynnum QLD  
3396 5822

Hood Sails  
181 Wynnum Esplanade, Wynnum QLD  
0419 799 958

Ullman Sails  
112 Glenora St, Wynnum QLD  
(07) 3348 7245

### Chandlery

Muir Marine  
453 Esplanade, Manly QLD  
(07) 3396 9988

Road Tech Marine  
20 Redland Bay Rd, Capalaba QLD  
(07) 3914 9543

### Boat Building / Repairs – Located at RQYS

JSA Marine  
(07) 3348 5682

David Glenn Boat Building  
0412 878 144

### Physio

Manly Physiotherapy & Pilates  
3/443 Esplanade, Manly QLD  
(07) 3396 8137

Bounce Physio Birkdale  
190 Birkdale Rd, Birkdale QLD  
(07) 3822 2122

### Pharmacy

Manly Village Pharmacy  
9/222 Stratton Terrace, Manly QLD  
(07) 3396 8999

### Groceries

IGA Manly Village  
Cnr Stratton Tce & Cambridge Parade  
(07) 3396 1980

Woolworths Wynnum Central  
145 Florence St, Wynnum QLD  
(07) 3513 4416

### Butcher

The Local Butcher  
222 Stratton Terrace, Manly QLD  
(07) 3396 2195

### Bakery

Manly Bakery  
222 Stratton Terrace, Manly QLD  
(07) 3396 5688

### Accommodation

#### Manly Marine Cover Motel

Located on the Grounds of RQYS  
(07) 3348 1000

Limited Camping Facilities at RQYS

Limited camping MAY be available  
(07) 3396 8666

#### The Manly Hotel

54 Cambridge Parade, Manly QLD  
(07) 3249 5999

#### Waterloo Bay Hotel

75 Berrima St, Wynnum QLD  
(07) 3893 2344

#### Pelican's Nestle Inn

149 Wynnum Esplanade, Wynnum QLD  
(07) 3396 3214

#### Wynnum Anchor Motel

14 Adam St, Wynnum QLD  
(07) 3396 3037

### Local Weather Tide

Local Weather: The RQYS Weather Station can be found at: <https://www.rqys.com.au/weather-station/>  
The Weather Station records from above the club Bay Lookout.

BOM: Radar: <http://www.bom.gov.au/products/IDR663.loop.shtml>

Marine Forecast: <http://www.bom.gov.au/qld/forecasts/moreton-bay.shtml>

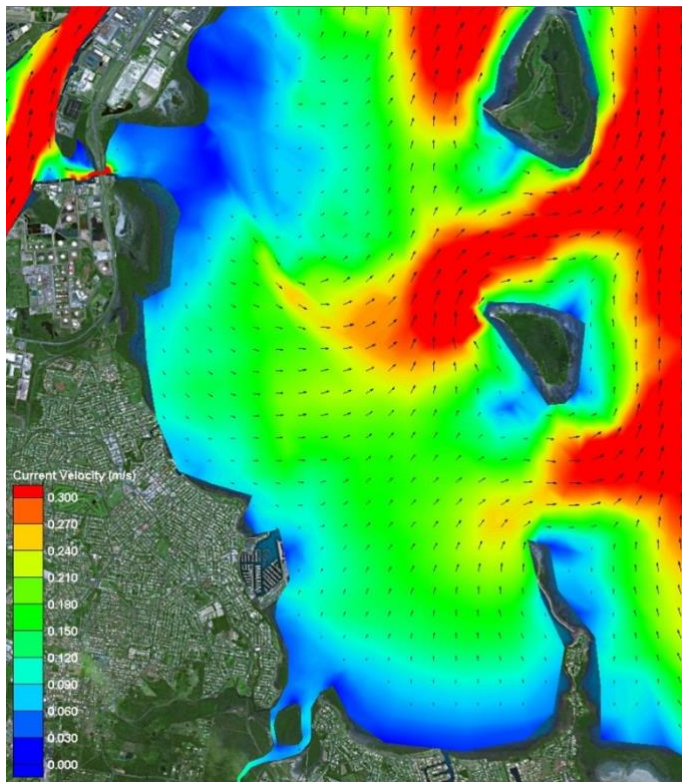
Other forecasts: Predict Wind: <https://forecast.predictwind.com/table/>

Seabreeze: <https://www.seabreeze.com.au/weather/wind-forecast/brisbane>

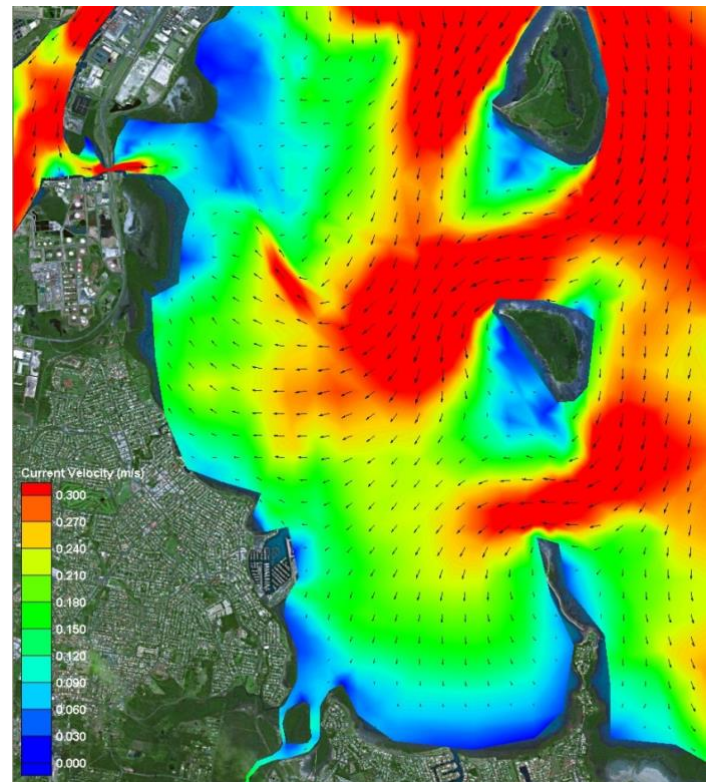
WillyWeather: <https://wind.willyweather.com.au/qld/brisbane/brisbane.html>

---

### Waterloo Bay Ebb



### Waterloo Bay Flood



LOCALITY		MAP GRID
578 Royal Esplanade access		A6
Eastern Beach (windsurfing)		P7-P8
Davenport Drive dog off-lead area		N10-P7
Inspiration Point lookout (fishing)		M10
Public (Harbour South) Carpark		A4
Public (South) Boatramp		B4
Public (South) Pontoon		C3

NEARBY MANLY HARBOUR VILLAGE SERVICES  
 900m / 5-15min  
 CONVENIENT RQYS & BAYSIDE MANLY ACCESS  
 Manly Station: 15km  
 Brisbane CBD: 30min  
 20min drive

BUILDINGS		MAP GRID
Australian Sailing (QLD)		C8
Bayview Lookout		P6
Boatyard [Former Marina] Office		H5
Cavill Building / FLAGS Room		C5
Clubhouse		C6
Manly Marina Cove Motel (MMCM)		A7 / B8
Marina Office		F5
Monument		K6
Sailing Academy		B5
Sailing Office		D6
Sheds / Storage Lockers		K6, J7- L7
Sports Amenities Block		F5
Trades / Services Sheds		H7
Volunteers' Sheds		D8, J5
Windsurfing Centre of Excellence		P6
Youth Squad Shed		F7

GROUNDS		MAP GRID
Academy (Tackers) Rigging Lawn		B5
DOSA (designated smoking) areas		A6, A7
Kids' / dinghy beach		N5
Rigging Lawn 1 (Main / Functions)		D5
Rigging Lawn 2 (Marina Office)		F6
Rigging Lawn 3 (Youth Squad)		F7
Rigging Lawn 4 (Eastern grounds)		L6, M6
Regatta camping area		M7
Regatta trailer parking area		L6
Slipway 2 (Longer-term storage)		J7-L7
Windsurfing - rigging / hosedown		N7, P6

FACILITIES		MAP GRID
Dock - Bill Kirby (VIP: booking only)		D4
Dock - Fit-out work (short-term)		H4
Dock - Fuel (Diesel & PULP)		D4-E4
Fuel - Bowser (shoreside)		D5
HAZMAT Disposals shed		H5
Ramp 1 - Academy (Tackers)		C4
Ramp 2 - Main (Launch / retrieval)		E5
Ramp 3 - Slipway (Boatyard)		G5
Ramp 4 - Dinghy (Kids' beach)		N5
RQYS Boatyard		G5/6-H5/6
RQYS Sheds / Storage Lockers		K6 / J7-L7
Slipway 2 (longer-term storage)		J7-L7
Travelift (35t) & Slewing Crane		H4/H5

AMENITIES		MAP GRID
BBQs		B4, P6
Beach (RQYS - dinghy / kids')		N5
Beach (windsurfing, dogs, etc)		N10-P7
Gym		F5
Hosedown stations (boats, trailers, vehicles)		E7, F6, K7, M5
Hosedowns (personal / gear)		N7, P6
Kids' play areas		B4, N5
Laundry facilities		H5, P6
Seating / picnic areas		D5, G7, H6, N5, P6
Showers (bathrooms)		F6, H5, P6
Showers (outdoors)		F6, N7
Toilets		C5, C6, F6, H5, H7, P6

BUSINESSES		MAP GRID
Andrew Woodforth Marine		H7
Brisbane Scuba		H7
CMA Mechanical & Marine		K6
David Glenn Boat Builders		H7
Electech Industries		H7
Green Marine Electrical		K6
JSA Marine		H7
Ocean Logic		J7
Paper Sailors Rock		H7
Professional Boat Care		H7
Qld Marine Training Services		B5
Seadog Marine		H7
Signature Yacht Services		L7
SigTech Electrical		L7
World Wide Boat Brokers		B6
Yachtshare		H5

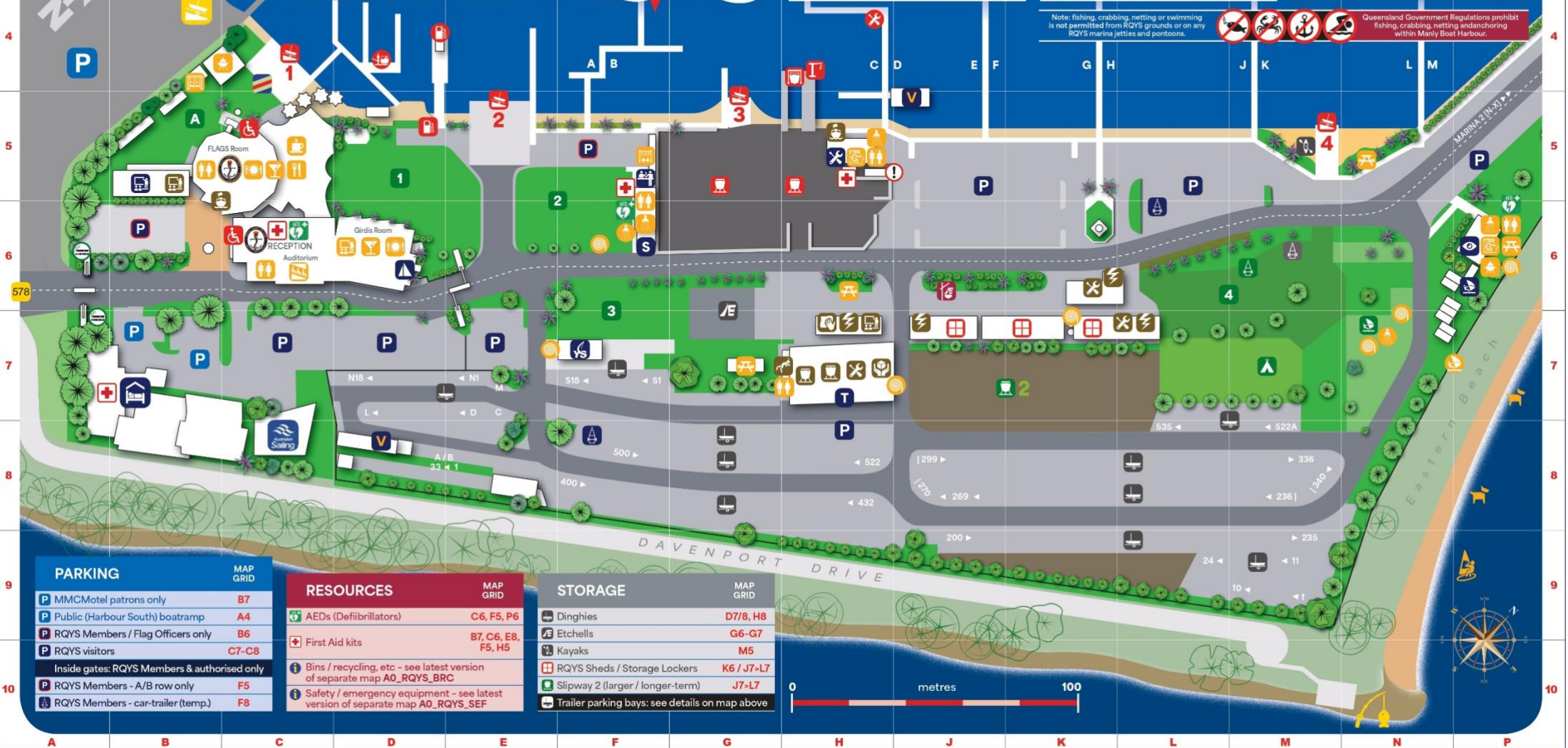
# RQYS DIRECTORY

MAIN SQUADRON PRECINCT / MARINA 1

Note: fishing, crabbing, netting or swimming is not permitted from RQYS grounds or on any RQYS marina jetties and pontoons.



Queensland Government Regulations prohibit fishing, crabbing, netting and anchoring within Manly Boat Harbour.



PARKING		MAP GRID
MMCMotel patrons only		B7
Public (Harbour South) boatramp		A4
RQYS Members / Flag Officers only		B6
RQYS visitors		C7-C8
Inside gates: RQYS Members & authorised only		
RQYS Members - A/B row only		F5
RQYS Members - car-trailer (temp.)		F8

RESOURCES		MAP GRID
AEDs (Defibrillators)		C6, F5, P6
First Aid kits		B7, C6, E8, F5, H5
Bins / recycling, etc - see latest version of separate map A0_RQYS_BRC		
Safety / emergency equipment - see latest version of separate map A0_RQYS_SEF		

STORAGE		MAP GRID
Dinghies		D7/8, H8
Etchells		G6-G7
Kayaks		M5
RQYS Sheds / Storage Lockers		K6 / J7-L7
Slipway 2 (larger / longer-term)		J7-L7
Trailer parking bays: see details on map above		

# ROYAL QUEENSLAND YACHT SQUADRON – THE SAILING GATEWAY TO MORETON BAY

