



2025 WASZP Atlantic Coast Championships (ACCs)

Organizing Authority: Toms River Yacht Club (TRYC)

1464 Riviera Ave, Toms River, NJ 08753

June 6th – 8th, 2025

NOTICE OF RACE

The notation '[NP]' in a rule of the Notice of Race (NoR) means that a boat may not protest another boat for breaking that rule. This changes RRS 60.1.

1 RULES

- 1.1 The event is governed by the *rules* as defined in [The Racing Rules of Sailing for 2025–2028 \(RRS\)](#).
- 1.2 The [US Sailing Prescriptions](#) to the RRS, and the [current \(R15\) official WASZP Class rules](#) shall also apply.
- 1.3 [DP][NP] RRS 40.1 applies at all times while afloat.
- 1.4 RRS Appendix T, Arbitration, will apply.
- 1.5 The Vakaros RaceSense system will be utilized by the race committee. This changes RRS 41(c).
- 1.6 RaceSense information is available to all boats.
- 1.7 Failure of a Vakaros device or the RaceSense system shall not be grounds for redress. This changes RRS 63.1, 60.1(b), 60.2(b) and 60.3(b).
- 1.8 While racing, each boat shall have a working Vakaros WASZP mount and device configured for RaceSense and mounted in the manufacturer provided GPS mount location. Boats shall either provide their own working Vakaros device or shall rent a Vakaros device for \$135.
- 1.9 Indicate when registering, if a rental Atlas 2 device or Race Sense license is required. WeCANFoil (<https://wecanfoil.org>) will be managing these arrangements

for competitors. To rent an Atlas 2 and/or book a charter, please click [here](#).

- 1.10 All race start times and signals will be taken from Vakaros. RRS 26 is changed to, "Races will be started by RaceSense. Times shall be taken from the timer display on a boat's Vakaros unit. There may not be any visual or sound signals made by the RC signal boat. Visual and sound signals may be made as a courtesy to sailors, the RaceSense timer on the Vakaros unit supersedes any visual or sound signals made by the race committee signal boat" Any penalty flags (RRS 30.1, 30.2, 30.3, or 30.4) in effect are displayed on the Vakaros unit within the boat.
- 1.11 If there is a conflict between the sailing instructions and notice of race, the sailing instructions will take precedence. This changes RRS 63.7.

2 SIGNALS MADE ASHORE

- 2.1 Signals made ashore will be displayed on the Toms River Yacht Club (TRYC) flag pole.
- 2.2 Flag AP displayed ashore means races are postponed. The first warning signal will be made not less than thirty (30) minutes after the AP displayed ashore is lowered. This changes the RRS Race Signals AP Rule.

3 CHANGES TO THE SAILING INSTRUCTIONS AND SCHEDULE

- 3.1 Any change to the sailing instructions will be posted before 0900 hrs on the day it will take effect, except that any change to the schedule of races will be posted by 2000 on the day before it will take effect.

4 SAILING INSTRUCTIONS

Written Sailing Instructions (SIs) will be available on the Official Notice Board (ONB) prior to the first day of the event.

5 COMMUNICATION

- 5.1 The Official Noticeboard (ONB) is located at <https://racehub.waszp.com/eventdetail/436>
- 5.2 A WhatsApp group may be used for unofficial communication. A QR code to join the WhatsApp group will be made available to competitors on site check-in.

6 ELIGIBILITY AND ENTRY

- 6.1 The event is open to all boats who are members of the WASZP class.
- 6.2 All competitors shall be a member of their home nation's national class association (NCA). In the event that no such national association exists, a competitor must join an alternate NCA, such as WASZP USA or WASZP Canada. NCA membership can be purchased at <https://racehub.waszp.com/memberships>.
- 6.3 Boats may enter by registering online at <https://racehub.waszp.com/eventdetail/436>.

- 6.4 To be considered an entry in the event, a boat shall complete all registration requirements and pay all fees.
- 6.5 Entry closes on June 5th. Late entries may be considered at the discretion of the Organising Authority. To request late entry contact waszpclassusa@gmail.com.
- 6.6 All boats are required to either provide their own Vakaros device or rent one for a fee. (See 5.3)

7 FEES

- 7.1 Before May 15th, the entry fee is \$199. After May 15th, the entry fee is \$225.
- 7.2 Cancellations received before June 1st will receive a full refund minus 3.5% to cover merchant fees. Cancellations after June 1st will not receive a refund.
- 7.3 Boats without a Vakaros device shall be provided with one and shall pay an additional Vakaros rental fee of \$135.

8 ADVERTISING [NP] [DP]

If requested by the Organising Authority, boats shall display advertising chosen and supplied by the Organising Authority.

9 EVENT FORMAT

- 9.1 All rigs will race in a single fleet with the same rating.

10 SCHEDULE

- 10.1 The table below outlines the provisional event schedule:

Date	Activity	Time
Fri. 6/6	Competitors Briefing	0930
Fri. 6/6	First Warning	1100
Sat. 6/7	Competitors Briefing	0930
Sat. 6/7	First Warning	1100
Sat. 6/7	Reception with Drinks & Food following sailing	1600
Sun. 6/8	Competitors Briefing	0930
Sun. 6/8	First Warning	1100
Sun. 6/8	No warning signal made after	1500

- 10.2 A daily briefing will take place at 0930.
- 10.3 On the last scheduled day of racing, no warning signal will be made after 1500.

11 EQUIPMENT INSPECTION

- 11.1 A boat or equipment may be inspected at any time for compliance with the *rules*.
- 11.2 The penalty for infringement of a class rule may be less than disqualification.

12 COURSES

- 12.1 The courses will be described in the SIs.

13 PENALTY SYSTEM

- 13.1 RRS 44.1 and P2.1 are changed so that the Two-Turns Penalty is replaced by the One-Turn Penalty.

14 SCORING

- 14.1 3 races are required to be completed to constitute a championship.
- 14.2 The Low Point Scoring System of RRS Appendix A will apply with the following modifications:
 - (a) When fewer than 5 races have been completed, a boat's series score is the total of her race scores.
 - (b) When 5 to 8 races have been completed, a boat's series score is the total of her race scores excluding her worst score.
 - (c) When 9 to 12 races have been completed, a boat's series score is the total of her race scores excluding her two worst scores.
 - (d) When 13 or more races have been completed, a boat's series score is the total of her race scores excluding her three worst scores.

15 SUPPORT VESSELS

- 15.1 Support vessels are permitted at this event.

16 CHARTERED OR LOANED BOATS

For charter boat enquiries:

- Charters may be available through We CAN Foil and Rick Wood. Email agustin@wecanfoil.org or rick.wood@me.com to inquire about chartering a boat.
- Submit a request on RaceHub (log into RaceHub > Events > Charter Boats > Add Charter Boat Request).

17 BERTHING

[DP] [NP] Boats shall be kept in their assigned places while in the boat park. See the venue diagram in Appendix 3.

18 DATA PROTECTION

The personal information you provide to the Organising Authority will be used to facilitate your participation in the event. If you have agreed to be bound by the Racing Rules of Sailing and the other rules that govern the event (the *rules*), the legal basis for processing that personal information is contract. If you are not bound by the *rules*, the legal basis for processing that personal information is legitimate interest. Your personal information will be stored and used in accordance with the Organising Authority's privacy policy. When required by the rules, personal information may be shared with your national authority and/or World Sailing. The results of the event and the outcome of any hearing or appeal may be published.

19 RIGHTS TO USE NAMES AND LIKENESS (PHOTOGRAPHY CONSENT)

Competitors automatically grant to the Organising Authority without payment the right in perpetuity to make, use and show any motion pictures, still pictures and live, taped or filmed television of or relating to the event.

20 RISK STATEMENT

20.1 Rule 3 of the Racing Rules of Sailing states: 'The responsibility for a boat's decision to participate in a race or to continue racing is hers alone.'

20.2 Sailing is by its nature an unpredictable sport and therefore inherently involves an element of risk. By taking part in the event, each competitor agrees and acknowledges that:

- (a) They are aware of the inherent element of risk involved in the sport and accept responsibility for the exposure of themselves, their crew and their boat to such inherent risk whilst taking part in the event;
- (b) They are responsible for the safety of themselves, their crew, their boat and their other property whether afloat or ashore;
- (c) They accept responsibility for any injury, damage or loss to the extent caused by their own actions or omissions;
- (d) Their boat is in good order, equipped to sail in the event and they are fit to participate;
- (e) The provision of a race management team, patrol boats and other officials and volunteers by the event organizer does not relieve them of their own responsibilities;
- (f) The provision of patrol boat cover is limited to such assistance, particularly in extreme weather conditions, as can be practically provided in the circumstances;
- (g) It is their responsibility to familiarise themselves with any risks specific to this venue or this event drawn to their attention in any rules and information produced for the venue or event and to attend any competitor briefing held for the event.

21 INSURANCE

- 21.1 Each participating boat shall be insured with valid third-party liability insurance with a minimum cover of \$500,000 per incident or the equivalent.

22 PRIZES

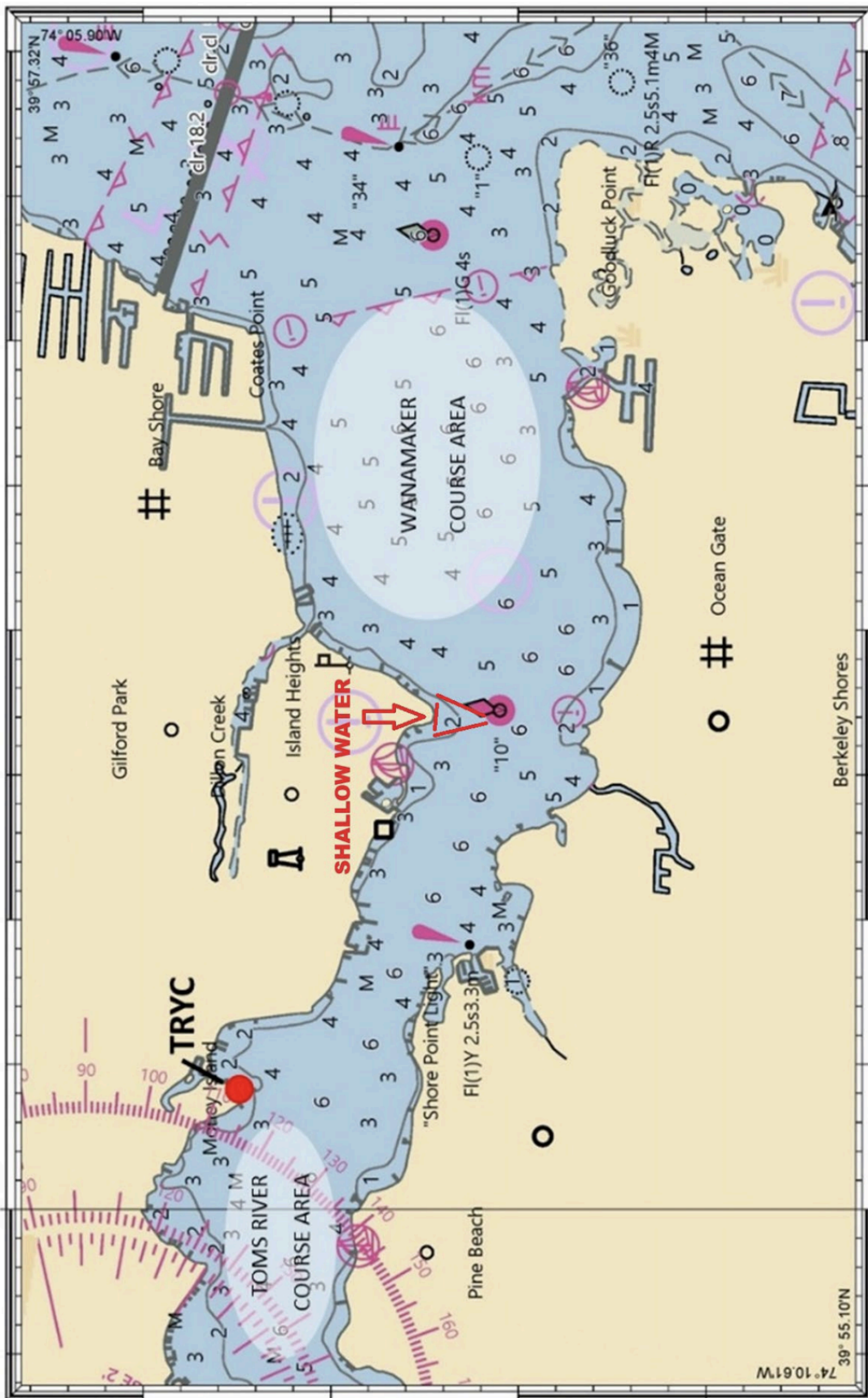
- 22.1 Prizes will be awarded for the following positions and may be amended according to the split of the fleets. Ages are taken as of the event start date:
- (a) Top 3 men
 - (b) Top 3 women
 - (c) Top sailor in each age division: Junior (U19), Youth (U21), Core (21-29), Master (30-49), Super Master (50+)
 - (d) Top U16 (not 8.2 rig)

23 FURTHER INFORMATION

For further information, please contact waszpclassusa@gmail.com.

For venue queries, please contact Robert Baxter (rabaxter34@gmail.com).

Appendix 1: Course Areas



Appendix 3: Storage and Venue Diagram

